

À des fins de recherche uniquement

Anticorps Polyclonal de lapin anti-EMR1



Numéro de catalogue: 27044-1-AP

27 Publications

Informations de base

| | | |
|---|--|--|
| Numéro de catalogue: 27044-1-AP | Numéro d'acquisition GenBank: BC059395 | Méthode de purification: Purification par affinité contre l'antigène |
| Taille: 150ul, Concentration: 800 µg/ml by Nanodrop and 467 µg/ml by Bradford method using BSA as the standard; | Identification du gène (NCBI): 2015 | Dilutions recommandées: WB 1:500-1:2000 IHC 1:400-1:1600 IF 1:50-1:500 |
| Hôte: Lapin | Nom complet: egf-like module containing, mucin-like, hormone receptor-like 1 | |
| Isotype: IgG | MW calculé: 886 aa, 97 kDa | |
| Immunogen Catalog Number: AG25883 | MW observés: 160 kDa | |

Applications

Applications testées:

IF, IHC, WB, ELISA

Demandes citées:

IF, IHC, WB

Spécificité de l'espèce:

Humain, souris

Espèces citées:

Humain, porc, rat, souris

Remarque-IHC: il est suggéré de démasquer l'antigène avec un tampon de TE buffer pH 9,0; (*) A défaut, 'le démasquage de l'antigène peut être effectué avec un tampon citrate pH 6,0.

Contrôles positifs:

WB : unboiled RAW 264.7 cells, cellules HL-60

IHC : tissu splénique de souris, tissu hépatique de souris

IF : macrophages péritonéaux de souris,

Informations générales

EMR1 (EGF-like module containing mucin-like hormone receptor 1), also known as Adhesion G protein-coupled receptor E1 (ADGRE1), is a surface receptor with seven transmembrane segments that belong to the EGF-7-transmembrane family of G protein-coupled receptors (PMID: 14647991, 7601460). EMR1 expression is restricted to eosinophilic granulocytes, where expression is overlapping with the eotaxin receptor CCR3 and the immunoglobulin-like lectin Siglec-8. Absence on other leukocytes, including basophils, implies that EMR1 is a highly specific marker for eosinophils in humans and may be used as a novel therapeutic target for eosinophilic disorders (PMID: 17823986, 24530099). F4/80, the murine homolog of EMR1, is a marker of murine macrophage. The apparent molecular weight of F4/80 is 160 kDa, which is larger than the calculated molecular weight due to post-translational modifications (PMID: 7308288; 8647179).

Publications notables

| Autrice | Pubmed ID | Journal | Application |
|------------|-----------|-----------------|-------------|
| Yu-Hui Gu | 36386139 | Front Pharmacol | IF |
| Junjie Li | 33080309 | Cancer Lett | IF |
| Huihui Tao | 34843873 | Toxicol Lett | IHC |

Stockage

Stockage:

Stocker à -20°C. Stable pendant un an après l'expédition.

Tampon de stockage:

PBS avec azoture de sodium à 0,02 % et glycérol à 50 % pH 7,3

L'aliquotage n'est pas nécessaire pour le stockage à -20C

*** Les 20ul contiennent 0,1% de BSA.

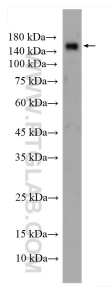
For technical support and original validation data for this product please contact:

T: 1 (888) 4PTGLAB (1-888-478-4522) (toll free in USA), or 1(312) 455-8498 (outside USA)

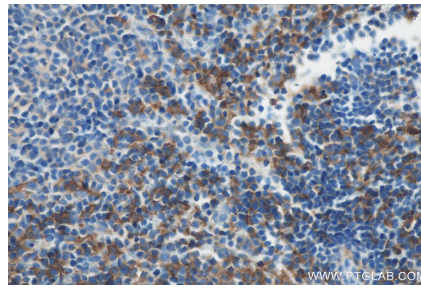
E: proteintech@ptglab.com
W: ptglab.com

This product is exclusively available under Proteintech Group brand and is not available to purchase from any other manufacturer.

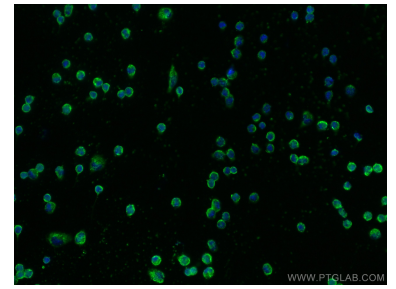
Données de validation sélectionnées



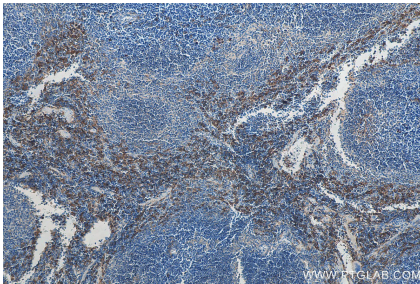
unboiled RAW 264.7 cells were subjected to SDS PAGE followed by western blot with 27044-1-AP (EMR1 antibody) at dilution of 1:1000 incubated at room temperature for 1.5 hours.



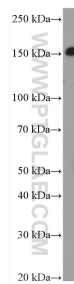
Immunohistochemical analysis of paraffin-embedded mouse spleen tissue slide using 27044-1-AP (EMR1 antibody) at dilution of 1:800 (under 40x lens). Heat mediated antigen retrieval with Tris-EDTA buffer (pH 9.0).



Immunofluorescent analysis of (-20°C Ethanol) fixed mouse peritoneal macrophages using EMR1 antibody (27044-1-AP) at dilution of 1:200 and CoraLite®488-Conjugated AffiniPure Goat Anti-Rabbit IgG(H+L).



Immunohistochemical analysis of paraffin-embedded mouse spleen tissue slide using 27044-1-AP (EMR1 antibody) at dilution of 1:800 (under 10x lens). Heat mediated antigen retrieval with Tris-EDTA buffer (pH 9.0).



HL-60 cells were subjected to SDS PAGE followed by western blot with 27044-1-AP (EMR1 antibody) at dilution of 1:300 incubated at room temperature for 1.5 hours.