

À des fins de recherche uniquement

Anticorps Polyclonal de lapin anti-RAD21



Numéro de catalogue: 27071-1-AP

Phare

3 Publications

Informations de base

Numéro de catalogue:

27071-1-AP

Taille:

150ul, Concentration: 650 µg/ml by Nanodrop and 433 µg/ml by Bradford method using BSA as the standard;

Hôte:

Lapin

Isotype:

IgG

Immunogen Catalog Number:

AG25481

Numéro d'acquisition GenBank:

BC050381

Identification du gène (NCBI):

5885

Nom complet:

RAD21 homolog (S. pombe)

MW calculé

631 aa, 72 kDa

MW observés:

120 kDa

Méthode de purification:

Purification par affinité contre l'antigène

Dilutions recommandées:

WB 1:1000-1:4000

IHC 1:50-1:500

IF 1:50-1:500

Applications

Applications testées:

IF, IHC, WB, ELISA

Demandes citées:

IHC, WB

Spécificité de l'espèce:

canidé, Humain

Espèces citées:

Humain

Remarque-IHC: il est suggéré de démasquer l'antigène avec un tampon de TE buffer pH 9,0; (*) A défaut, le démasquage de l'antigène peut être effectué avec un tampon citrate pH 6,0.

Contrôles positifs:

WB : cellules A549, cellules HeLa

IHC : tissu de cancer du sein humain,

IF : cellules MDCK,

Informations générales

RAD21, also named as Nuclear matrix protein 1, is a 631 amino acid protein, which belongs to the rad21 family. The calculated molecular weight of RAD21 is 72 kDa, but the phosphorylated RAD21 is about 120 kDa. The protein encoded by this gene is highly similar to the gene product of Schizosaccharomyces pombe rad21, a gene involved in the repair of DNA double-strand breaks, as well as in chromatid cohesion during mitosis. This protein is a nuclear phospho-protein, which becomes hyperphosphorylated in cell cycle M phase. The highly regulated association of this protein with mitotic chromatin specifically at the centromere region suggests its role in sister chromatid cohesion in mitotic cells

Publications notables

| Autrice | Pubmed ID | Journal | Application |
|------------|-----------|----------------|-------------|
| Yulan Zeng | 32896617 | Cancer Lett | WB |
| Rui Gou | 35860572 | Front Oncol | IHC, WB |
| Yiming He | 33931584 | Cell Death Dis | WB |

Stockage

Stockage:

Stocker à -20°C. Stable pendant un an après l'expédition.

Tampon de stockage:

PBS avec azoture de sodium à 0,02 % et glycérol à 50 % pH 7,3

L'aliquotage n'est pas nécessaire pour le stockage à -20C

*** Les 20ul contiennent 0,1% de BSA.

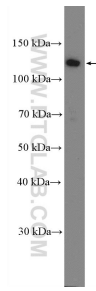
For technical support and original validation data for this product please contact:

T: 1 (888) 4PTGLAB (1-888-478-4522) (toll free in USA), or 1(312) 455-8498 (outside USA)

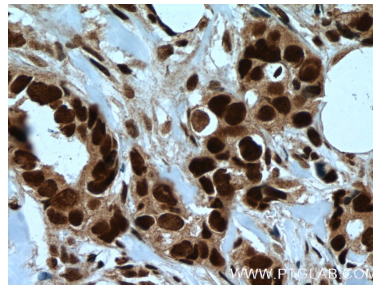
E: proteintech@ptglab.com
W: ptglab.com

This product is exclusively available under Proteintech Group brand and is not available to purchase from any other manufacturer.

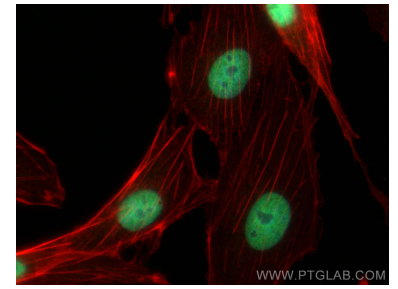
Données de validation sélectionnées



A549 cells were subjected to SDS PAGE followed by western blot with 27071-1-AP (RAD21 Antibody) at dilution of 1:2000 incubated at room temperature for 1.5 hours.



Immunohistochemical analysis of paraffin-embedded human breast cancer tissue slide using 27071-1-AP (RAD21 Antibody) at dilution of 1:200 (under 40x lens). Heat mediated antigen retrieval with Tris-EDTA buffer (pH 9.0).



Immunofluorescent analysis of (4% PFA) fixed MDCK cells using RAD21 antibody (27071-1-AP) at dilution of 1:200 and CoraLite®488-Conjugated AffiniPure Goat Anti-Rabbit IgG(H+L), CL594-phalloidin (red).