

À des fins de recherche uniquement

Anticorps Polyclonal de lapin anti-SCRIB



Numéro de catalogue: 27083-1-AP

1 Publications

Informations de base

Numéro de catalogue: 27083-1-AP	Numéro d'acquisition GenBank: BC036905	Méthode de purification: Purification par affinité contre l'antigène
Taille: 150ul, Concentration: 1000 µg/ml by Nanodrop and 500 µg/ml by Bradford method using BSA as the standard;	Identification du gène (NCBI): 23513	Dilutions recommandées: WB 1:2000-1:12000
Hôte: Lapin	Nom complet: scribbled homolog (Drosophila)	
Isotype: IgG	MW calculé: 1630 aa, 175 kDa	
Immunogen Catalog Number: AG25795	MW observés: 260 kDa	

Applications

Applications testées: WB, ELISA	Contrôles positifs: WB : cellules NIH/3T3,
Demandes citées: WB	
Spécificité de l'espèce: Humain, souris	
Espèces citées: souris	

Informations générales

SCRIB encodes a large, 260-kDa cytoplasmic scaffolding protein that comprises a large leucine-rich repeat (LRR) region and 4 PDZ domains that regulate protein-protein interactions. In mammals, cell polarity is established and maintained by at least 3 protein modules (Scrib, Crumbs, and Par). The apical (Crumbs and Par) and basolateral (Scrib) modules function in a mutually antagonistic relationship to regulate various polarization processes such as apical-basal polarity, planar cell polarity, asymmetric cell division and migration. The loss of SCRIB in malignant tumors suggest that it has potential to be a tumor suppressor. Alteration of polarity through deletion, downregulation, overexpression, and mislocalization can induce structural and functional alteration of cells that might be related to tumorigenesis. Mislocalization of SCRIB is involved in epithelial-to-mesenchymal transition (EMT) by inducing loss of E-cadherin. Deregulated SCRIB expression induces tumorigenesis in breast and liver. (PMID: 28460446, PMID: 32564009)

Publications notables

Autrice	Pubmed ID	Journal	Application
Zhenyong Xiao	35509839	Oxid Med Cell Longev	WB

Stockage

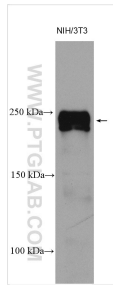
Stockage:
Stocker à -20°C. Stable pendant un an après l'expédition.
Tampon de stockage:
PBS avec azoture de sodium à 0,02 % et glycérol à 50 % pH 7,3
L'aliquotage n'est pas nécessaire pour le stockage à -20C

*** Les 20ul contiennent 0,1% de BSA.

For technical support and original validation data for this product please contact:
T: 1 (888) 4PTGLAB (1-888-478-4522) (toll free in USA), or 1(312) 455-8498 (outside USA)
E: proteintech@ptglab.com
W: ptglab.com

This product is exclusively available under Proteintech Group brand and is not available to purchase from any other manufacturer.

Données de validation sélectionnées



NIH/3T3 cells were subjected to SDS PAGE followed by western blot with 27083-1-AP (SCRIB antibody) at dilution of 1:6000 incubated at room temperature for 1.5 hours.