

À des fins de recherche uniquement

Anticorps Polyclonal de lapin anti-CCDC124



Numéro de catalogue: 27106-1-AP

Informations de base

Numéro de catalogue:

27106-1-AP

Taille:

150ul, Concentration: 450 µg/ml by Nanodrop and 300 µg/ml by Bradford method using BSA as the standard;

Hôte:

Lapin

Isotype:

IgG

Immunogen Catalog Number:

AG25930

Numéro d'acquisition GenBank:

BC013949

Identification du gène (NCBI):

115098

Nom complet:

coiled-coil domain containing 124

MW observés:

30-32 kDa

Méthode de purification:

Purification par affinité contre l'antigène

Dilutions recommandées:

WB 1:1000-1:4000

IF 1:50-1:500

Applications

Applications testées:

IF, WB, ELISA

Spécificité de l'espèce:

Humain, souris

Contrôles positifs:

WB : tissu cérébral de souris, tissu hépatique de souris, tissu placentaire humain

IF : cellules HeLa,

Informations générales

CCDC124 is a novel centrosomal and midbody protein that is highly conserved among species. It is ubiquitously expressed with high expression in brain, placenta, liver, spleen, and prostate. At telophase, CCDC124 dissociates from centrosomes and relocalizes to the midzone, subsequently accumulating at the midbody at cytokinesis. It interacts with the Ras-guanine nucleotide exchange factor 1B (RasGEF1B) and is involved in cytokinesis.

Stockage

Stockage:

Stocker à -20°C. Stable pendant un an après l'expédition.

Tampon de stockage:

PBS avec azoture de sodium à 0,02 % et glycérol à 50 % pH 7,3

L'aliquotage n'est pas nécessaire pour le stockage à -20C

*** Les 20ul contiennent 0,1% de BSA.

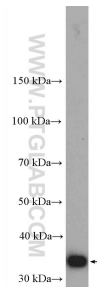
For technical support and original validation data for this product please contact:

T: 1 (888) 4PTGLAB (1-888-478-4522) (toll free in USA), or 1(312) 455-8498 (outside USA)

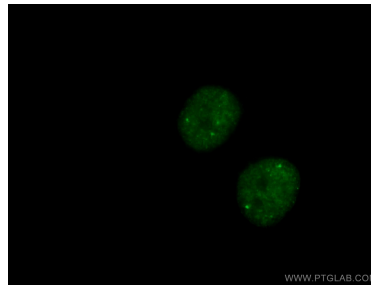
E: proteintech@ptglab.com
W: ptglab.com

This product is exclusively available under Proteintech Group brand and is not available to purchase from any other manufacturer.

Données de validation sélectionnées



mouse brain tissue were subjected to SDS PAGE followed by western blot with 27106-1-AP (CCDC124 Antibody) at dilution of 1:2000 incubated at room temperature for 1.5 hours.



Immunofluorescent analysis of (-20°C Ethanol) fixed HeLa cells using 27106-1-AP (CCDC124 antibody) at dilution of 1:50 and Alexa Fluor 488-conjugated AffiniPure Goat Anti-Rabbit IgG(H+L).