

À des fins de recherche uniquement

Anticorps Polyclonal de lapin anti-ADAM15



Numéro de catalogue: 27124-1-AP

Informations de base

Numéro de catalogue: 27124-1-AP	Numéro d'acquisition GenBank: BC014566	Méthode de purification: Purification par affinité contre l'antigène
Taille: 150ul , Concentration: 150 µg/ml by Nanodrop;	Identification du gène (NCBI): 8751	Dilutions recommandées: WB 1:500-1:3000
Hôte: Lapin	Nom complet: ADAM metallopeptidase domain 15	
Isotype: IgG	MW calculé: 93 kDa	
Immunogen Catalog Number: AG25947	MW observés: 70 kDa	

Applications

Applications testées: WB, ELISA	Contrôles positifs: WB : cellules A549, cellules HUVEC
Spécificité de l'espèce: Humain	

Informations générales

ADAM15, a member of the ADAM (a disintegrin and metalloprotease) family, is a membrane protein containing both protease and adhesion domains and may be involved in tumor invasion and metastasis (PMID:15756594). It is also named as MDC15. ADAM15 is required for the activation of the FAK and Src pathways to generate apoptosis resistance in response to apoptotic signalling or cell stress (PMID: 11741929). ADAM15 is processed during epididymal maturation and acrosome reaction and that it may play a role during sperm-egg binding. Jurkat and testicular cells expresses the precursor ADAM15 of 110 kDa, as well as the ADAM15 processing form, consisting of about 75-85 kDa (PMID:18390692). ADAM15 has some isoforms with the calculated molecular mass of 55-92 kDa.

Stockage

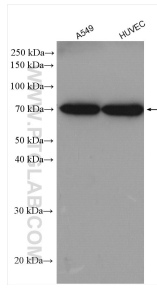
Stockage:
Stocker à -20°C. Stable pendant un an après l'expédition.
Tampon de stockage:
PBS avec azoture de sodium à 0,02 % et glycérol à 50 % pH 7,3
L'aliquotage n'est pas nécessaire pour le stockage à -20C

***** Les 20ul contiennent 0,1% de BSA.**

For technical support and original validation data for this product please contact:
T: 1 (888) 4PTGLAB (1-888-478-4522) (toll free in USA), or 1(312) 455-8498 (outside USA) E: proteintech@ptglab.com W: ptglab.com

This product is exclusively available under Proteintech Group brand and is not available to purchase from any other manufacturer.

Données de validation sélectionnées



Various lysates were subjected to SDS PAGE followed by western blot with 27124-1-AP (ADAM15 antibody) at dilution of 1:1500 incubated at room temperature for 1.5 hours.