

À des fins de recherche uniquement

Anticorps Polyclonal de lapin anti-NEK1



Numéro de catalogue: 27146-1-AP

Phare

1 Publications

Informations de base

Numéro de catalogue:
27146-1-AP

Taille:
150ul, Concentration: 850 µg/ml by Nanodrop and 333 µg/ml by Bradford method using BSA as the standard;

Hôte:
Lapin

Isotype:
IgG

Immunogen Catalog Number:
AG25970

Numéro d'acquisition GenBank:
BC114491

Identification du gène (NCBI):
4750

Nom complet:
NIMA (never in mitosis gene a)-related kinase 1

MW calculé:
1258 aa, 143 kDa

MW observés:
170 kDa

Méthode de purification:
Purification par affinité contre l'antigène

Dilutions recommandées:
WB 1:500-1:2000
IP 0.5-4.0 ug for IP and 1:500-1:1000 for WB
IHC 1:50-1:500
IF 1:200-1:800

Applications

Applications testées:
IF, IHC, IP, WB, ELISA

Demandes citées:
IP, WB

Spécificité de l'espèce:
Humain, rat

Espèces citées:
Humain

Remarque-IHC: il est suggéré de démasquer l'antigène avec un tampon de TE buffer pH 9,0; (*) À défaut, le démasquage de l'antigène peut être effectué avec un tampon citrate pH 6,0.

Contrôles positifs:

WB : cellules PC-12, cellules HeLa, tissu pancréatique de souris

IP : cellules PC-12, cellules HeLa

IHC : tissu de cancer du poumon humain,

IF : cellules HeLa,

Informations générales

Publications notables

Autrice	Pubmed ID	Journal	Application
Mateusz Gregorczyk	37188479	Life Sci Alliance	WB,IP

Stockage

Stockage:

Stocker à -20°C. Stable pendant un an après l'expédition.

Tampon de stockage:

PBS avec azoture de sodium à 0,02 % et glycérol à 50 % pH 7,3

L'aliquotage n'est pas nécessaire pour le stockage à -20C

*** Les 20ul contiennent 0,1% de BSA.

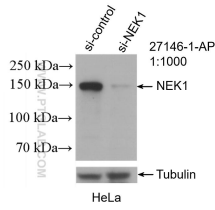
For technical support and original validation data for this product please contact:

T: 1 (888) 4PTGLAB (1-888-478-4522) (toll free in USA), or 1(312) 455-8498 (outside USA)

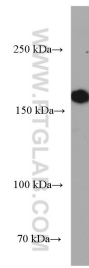
E: proteintech@ptglab.com
W: ptglab.com

This product is exclusively available under Proteintech Group brand and is not available to purchase from any other manufacturer.

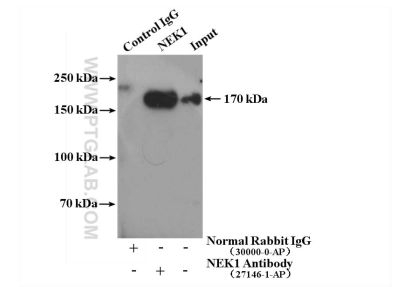
Données de validation sélectionnées



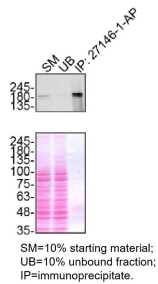
WB result of NEK1 antibody (27146-1-AP; 1:1000; incubated at room temperature for 1.5 hours) with sh-Control and sh-NEK1 transfected HeLa cells.



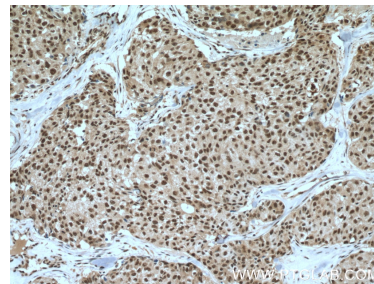
PC-12 cells were subjected to SDS PAGE followed by western blot with 27146-1-AP (NEK1 antibody) at dilution of 1:1000 incubated at room temperature for 1.5 hours.



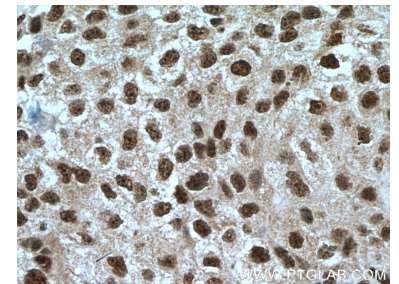
IP result of anti-NEK1 (IP:27146-1-AP, 4ug; Detection:27146-1-AP 1:500) with PC-12 cells lysate 3080 ug.



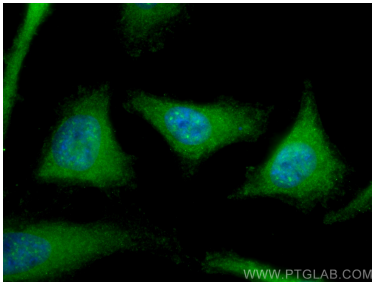
HeLa lysates prepared and IP of NEK1 performed using 1.0 µg of 27146-1-AP coupled to protein A-Sepharose beads. The Ponceau stained transfers of each blot are shown. Data provided by YCharOS, an open science company with a mission to validate commercial antibodies to improve scientific reproducibility and transparency.



Immunohistochemical analysis of paraffin-embedded human lung cancer tissue slide using 27146-1-AP (NEK1 antibody) at dilution of 1:200 (under 10x lens. Heat mediated antigen retrieval with Tris-EDTA buffer (pH 9.0).



Immunohistochemical analysis of paraffin-embedded human lung cancer tissue slide using 27146-1-AP (NEK1 antibody) at dilution of 1:200 (under 40x lens. Heat mediated antigen retrieval with Tris-EDTA buffer (pH 9.0).



Immunofluorescent analysis of (-20°C Methanol) fixed HeLa cells using NEK1 antibody (27146-1-AP) at dilution of 1:400 and CoraLite®488-Conjugated AffiniPure Goat Anti-Rabbit IgG(H+L).