

À des fins de recherche uniquement

Anticorps Polyclonal de lapin anti-Factor XII



Numéro de catalogue: 27154-1-AP

Informations de base

Numéro de catalogue: 27154-1-AP	Numéro d'acquisition GenBank: BC012390	Méthode de purification: Purification par affinité contre l'antigène
Taille: 150ul, Concentration: 800 µg/ml by Nanodrop and 367 µg/ml by Bradford method using BSA as the standard;	Identification du gène (NCBI): 2161	Dilutions recommandées: WB 1:1000-1:3000 IHC 1:50-1:500
Hôte: Lapin	Nom complet: coagulation factor XII (Hageman factor)	
Isotype: IgG	MW calculé: 615 aa, 68 kDa	
Immunogen Catalog Number: AG25912	MW observés: 80 kDa and 52 kDa	

Applications

Applications testées: IHC, WB, ELISA	Contrôles positifs: WB : tissu plasmatique humain, cellules HepG2, cellules Jurkat, cellules K-562 IHC : tissu hépatique humain,
Spécificité de l'espèce: Humain	
Remarque-IHC: il est suggéré de démasquer l'antigène avec un tampon de TE buffer pH 9,0; (*) À défaut, le démasquage de l'antigène peut être effectué avec un tampon citrate pH 6,0.	

Informations générales

Factor XII (F XII, Hageman factor) is a 80kD, single chain glycoprotein that circulates in blood as an inactive zymogen. F XII plays an important role in blood coagulation, fibrinolysis, and kinin generation. Factor XII is activated by kallikrein in alpha-factor XIIa, which is further converted by trypsin into beta-factor XIIa. Alpha-factor XIIa is composed of a 52 kDa NH₂-terminal heavy chain, called coagulation factor XIIa heavy chain, and a 28 kDa COOH-terminal light chain, called coagulation factor XIIa light chain, connected by a disulfide bond. Beta-factor XIIa is composed of 2 chains linked by a disulfide bond, an N-terminal nonapeptide, called beta-factor XIIa part 1, and coagulation factor XIIa light chain, also known in this context as beta-factor XIIa part 2.

Stockage

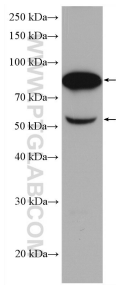
Stockage:
Stocker à -20°C. Stable pendant un an après l'expédition.
Tampon de stockage:
PBS avec azoture de sodium à 0,02 % et glycérol à 50 % pH 7,3
L'aliquotage n'est pas nécessaire pour le stockage à -20C

*** Les 20ul contiennent 0,1% de BSA.

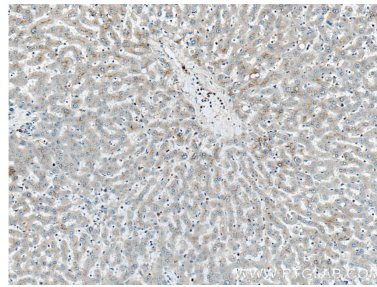
For technical support and original validation data for this product please contact:
T: 1 (888) 4PTGLAB (1-888-478-4522) (toll free in USA), or 1(312) 455-8498 (outside USA)
E: proteintech@ptglab.com
W: ptglab.com

This product is exclusively available under Proteintech Group brand and is not available to purchase from any other manufacturer.

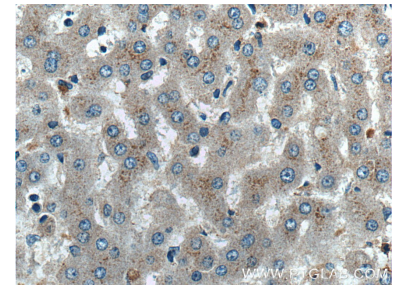
Données de validation sélectionnées



human plasma were subjected to SDS PAGE followed by western blot with 27154-1-AP (F12 antibody) at dilution of 1:2000 incubated at room temperature for 1.5 hours.



Immunohistochemical analysis of paraffin-embedded human liver tissue slide using 27154-1-AP (F12 antibody) at dilution of 1:200 (under 10x lens).



Immunohistochemical analysis of paraffin-embedded human liver tissue slide using 27154-1-AP (F12 antibody) at dilution of 1:200 (under 40x lens).