

À des fins de recherche uniquement

Anticorps Polyclonal de lapin anti-CCDC8



Numéro de catalogue: 27194-1-AP

Informations de base

Numéro de catalogue:
27194-1-AP

Taille:
150ul, Concentration: 800 µg/ml by Nanodrop and 367 µg/ml by Bradford method using BSA as the standard;

Hôte:
Lapin

Isotype:
IgG

Immunogen Catalog Number:
AG25794

Numéro d'acquisition GenBank:
BC025243

Identification du gène (NCBI):
83987

Nom complet:
coiled-coil domain containing 8

MW observés:
90 kDa, 59 kDa

Méthode de purification:
Purification par affinité contre l'antigène

Dilutions recommandées:
WB 1:500-1:1000
IP 0.5-4.0 ug for IP and 1:200-1:1000 for WB
IHC 1:50-1:500

Applications

Applications testées:
IHC, IP, WB, ELISA

Spécificité de l'espèce:
Humain

Remarque-IHC: il est suggéré de démasquer l'antigène avec un tampon de TE buffer pH 9.0; (*) À défaut, le démasquage de l'antigène peut être effectué avec un tampon citrate pH 6.0.

Contrôles positifs:

WB : cellules HEK-293,

IP : cellules HEK-293,

IHC : tissu de cancer du poumon humain,

Informations générales

Coiled-coil domain-containing protein 8 (CCDC8) is a 538-amino acid protein with the molecular mass of 59kD and 90kD cause of the posttranslational modifications including amidation, glycosylation, phosphorylation, and myristalation (PMID: 21737058). CCDC8 has 2 coiled-coil domains, and the proteins containing this domain are involved in diverse biological processes, such as the regulation of gene expression, cell division, and membrane fusion. CCDC8 is evolutionarily conserved, and CCDC8 mutation leads to the development of 3M syndrome in humans, a primordial growth disorder, by interacting with CUL7, OBSL1, and P53. Low-level or no expression of CCDC8 was shown to be closely related to the development of some tumors, such as renal cell carcinoma, multiple myeloma, breast cancer, and prostate cancer (PMID: 21737058, 27342910).

Stockage

Stockage:

Stocker à -20°C. Stable pendant un an après l'expédition.

Tampon de stockage:

PBS avec azoture de sodium à 0,02 % et glycérol à 50 % pH 7,3

L'aliquotage n'est pas nécessaire pour le stockage à -20C

*** Les 20ul contiennent 0,1% de BSA.

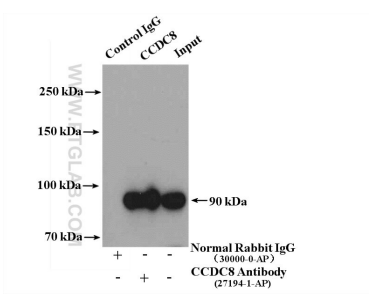
For technical support and original validation data for this product please contact:

T: 1 (888) 4PTGLAB (1-888-478-4522) (toll free in USA), or 1(312) 455-8498 (outside USA)

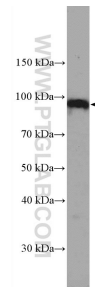
E: proteintech@ptglab.com
W: ptglab.com

This product is exclusively available under Proteintech Group brand and is not available to purchase from any other manufacturer.

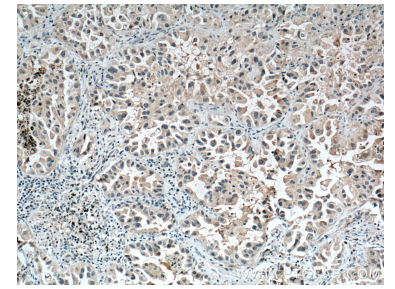
Données de validation sélectionnées



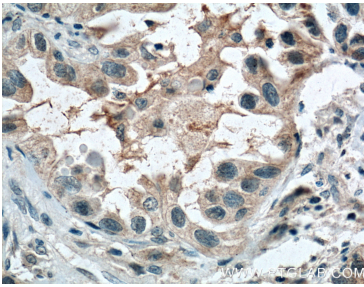
HEK-293 cells were subjected to SDS PAGE followed by western blot with 27194-1-AP (CCDC8 antibody) at dilution of 1:300.



HEK-293 cells were subjected to SDS PAGE followed by western blot with 27194-1-AP (CCDC8 Antibody) at dilution of 1:600 incubated at room temperature for 1.5 hours.



Immunohistochemical analysis of paraffin-embedded human lung cancer tissue slide using 27194-1-AP (CCDC8 Antibody) at dilution of 1:200 (under 10x lens). Heat mediated antigen retrieval with Tris-EDTA buffer (pH 9.0).



Immunohistochemical analysis of paraffin-embedded human lung cancer tissue slide using 27194-1-AP (CCDC8 Antibody) at dilution of 1:200 (under 40x lens). Heat mediated antigen retrieval with Tris-EDTA buffer (pH 9.0).