

À des fins de recherche uniquement

Anticorps Polyclonal de lapin anti-C8G



Numéro de catalogue: 27200-1-AP

Informations de base

| | | |
|---|---|---|
| Numéro de catalogue: 27200-1-AP | Numéro d'acquisition GenBank: BC113626 | Méthode de purification: Purification par affinité contre l'antigène |
| Taille: 150ul, Concentration: 500 µg/ml by Nanodrop; | Identification du gène (NCBI): 733 | Dilutions recommandées: WB 1:500-1:3000 IHC 1:50-1:500 |
| Hôte: Lapin | Nom complet: complement component 8, gamma polypeptide | |
| Isotype: IgG | MW calculé: 202 aa, 22 kDa | |
| Immunogen Catalog Number: AG17949 | MW observés: 18-22 kDa | |

Applications

Applications testées:
IHC, WB, ELISA

Spécificité de l'espèce:
Humain

Remarque-IHC: il est suggéré de démasquer l'antigène avec un tampon de TE buffer pH 9,0; (*) À défaut, 'le démasquage de l'antigène peut être effectué avec un tampon citrate pH 6,0.

Contrôles positifs:

WB : lait humain, tissu placentaire humain

IHC : tissu de cancer du sein humain, tissu de cancer du foie humain

Informations générales

The gamma chain of complement component 8 (C8G) is one of three different subunits (alpha, beta, and gamma) of the eighth complement component (C8), which is a component of the MAC (membrane attack complex) (PMID:33382892). Although the roles of C8A and C8B are directly associated with MAC formation, C8G is not essential in the assembly and activity of the MAC (PMID:11960635). Moreover, C8G was shown to inhibit neuroinflammation by interfering with the sphingosine-1-phosphate (S1P)-S1PR2 interaction (PMID:34149451).

Stockage

Stockage:

Stocker à -20°C. Stable pendant un an après l'expédition.

Tampon de stockage:

PBS avec azoture de sodium à 0,02 % et glycérol à 50 % pH 7,3

L'aliquotage n'est pas nécessaire pour le stockage à -20C

*** Les 20ul contiennent 0,1% de BSA.

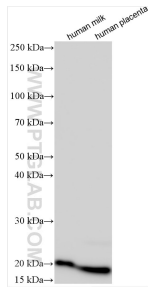
For technical support and original validation data for this product please contact:

T: 1 (888) 4PTGLAB (1-888-478-4522) (toll free in USA), or 1(312) 455-8498 (outside USA)

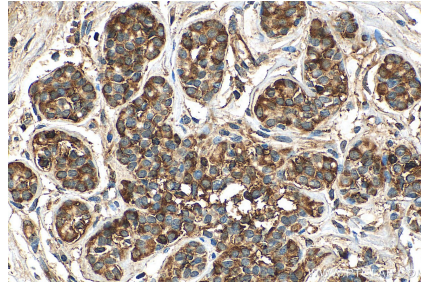
E: proteintech@ptglab.com
W: ptglab.com

This product is exclusively available under Proteintech Group brand and is not available to purchase from any other manufacturer.

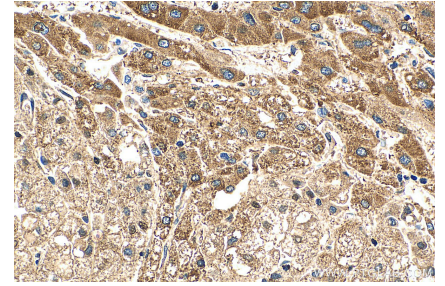
Données de validation sélectionnées



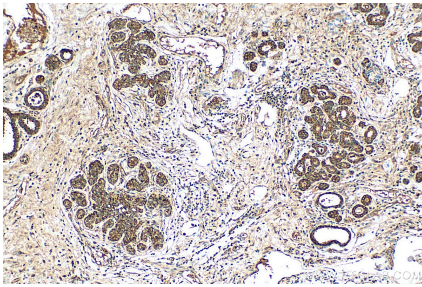
Various lysates were subjected to SDS PAGE followed by western blot with 27200-1-AP (C8G antibody) at dilution of 1:1500 incubated at room temperature for 1.5 hours.



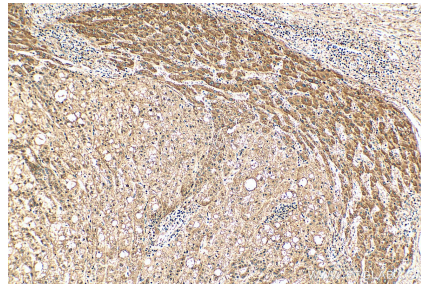
Immunohistochemical analysis of paraffin-embedded human breast cancer tissue slide using 27200-1-AP (C8G antibody) at dilution of 1:200 (under 40x lens). Heat mediated antigen retrieval with Tris-EDTA buffer (pH 9.0).



Immunohistochemical analysis of paraffin-embedded human liver cancer tissue slide using 27200-1-AP (C8G antibody) at dilution of 1:200 (under 40x lens). Heat mediated antigen retrieval with Tris-EDTA buffer (pH 9.0).



Immunohistochemical analysis of paraffin-embedded human breast cancer tissue slide using 27200-1-AP (C8G antibody) at dilution of 1:200 (under 10x lens). Heat mediated antigen retrieval with Tris-EDTA buffer (pH 9.0).



Immunohistochemical analysis of paraffin-embedded human liver cancer tissue slide using 27200-1-AP (C8G antibody) at dilution of 1:200 (under 10x lens). Heat mediated antigen retrieval with Tris-EDTA buffer (pH 9.0).