

À des fins de recherche uniquement

Anticorps Polyclonal de lapin anti-ASIC1



Numéro de catalogue: 27235-1-AP

Phare

8 Publications

Informations de base

Numéro de catalogue:
27235-1-AP

Taille:
150ul, Concentration: 900 µg/ml by Nanodrop and 500 µg/ml by Bradford method using BSA as the standard;

Hôte:
Lapin

Isotype:
IgG

Immunogen Catalog Number:
AG25941

Numéro d'acquisition GenBank:
NM_001095

Identification du gène (NCBI):

41
Nom complet:
amiloride-sensitive cation channel 2, neuronal

MW calculé:
60 kDa

MW observés:
60-70 kDa, 80-90 kDa

Méthode de purification:
Purification par affinité contre l'antigène

Dilutions recommandées:
WB 1:500-1:1000
IP 0.5-4.0 ug for IP and 1:200-1:1000 for WB
IHC 1:50-1:500

Applications

Applications testées:
IHC, IP, WB, ELISA

Demandes citées:
FC, IF, IHC, WB

Spécificité de l'espèce:
Humain, rat, souris

Espèces citées:
Humain, rat, souris

Remarque-IHC: il est suggéré de démasquer l'antigène avec un tampon de TE buffer pH 9,0; (*) A défaut, 'le démasquage de l'antigène peut être effectué avec un tampon citrate pH 6,0.

Contrôles positifs:

WB : tissu cérébral de souris, tissu cérébral de rat, tissu de cervelet de souris

IP : tissu cérébral de souris,

IHC : tissu de cancer du pancréas humain, tissu cérébral de souris

Informations générales

ASIC1 (Acid-sensing ion channel 1), also named as ACCN2, BNaC2 or amiloride-sensitive cation channel 2, is a member of the ASICs family. ASICs, an H⁺-gated subgroup of the epithelial Na⁺ channel/degenerin (ENaC/DEG) superfamily, are widely expressed throughout the central and peripheral nervous system and triggered by increased extracellular acidification (PMID: 28518134, 27941930). ASIC1 is a key player in acidosis-induced tumor growth and invasiveness. Clinically, alterations of ASIC1 are associated with poor survival in breast cancer (PMID: 26686084).

Publications notables

Autrice	Pubmed ID	Journal	Application
Yangyang Li	36162458	Eur J Pharmacol	WB, IHC
Na Du	36155179	Life Sci	WB, IHC, IF
Wei Wang	35894166	Endocrinology	WB

Stockage

Stockage:

Stocker à -20°C. Stable pendant un an après l'expédition.

Tampon de stockage:

PBS avec azoture de sodium à 0,02 % et glycérol à 50 % pH 7,3

L'aliquotage n'est pas nécessaire pour le stockage à -20C

*** Les 20ul contiennent 0,1% de BSA.

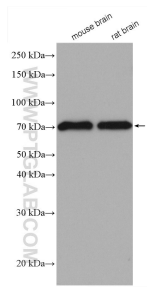
For technical support and original validation data for this product please contact:

T: 1 (888) 4PTGLAB (1-888-478-4522) (toll free in USA), or 1(312) 455-8498 (outside USA)

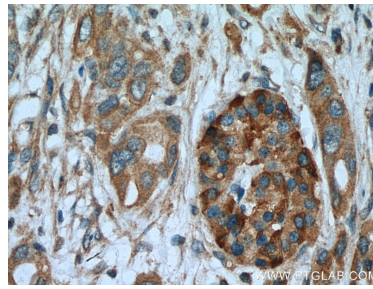
E: proteintech@ptglab.com
W: ptglab.com

This product is exclusively available under Proteintech Group brand and is not available to purchase from any other manufacturer.

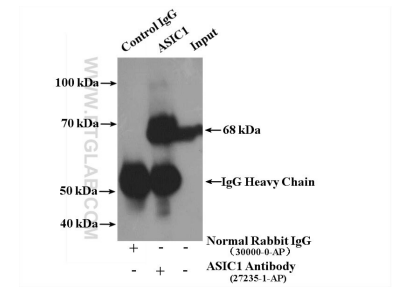
Données de validation sélectionnées



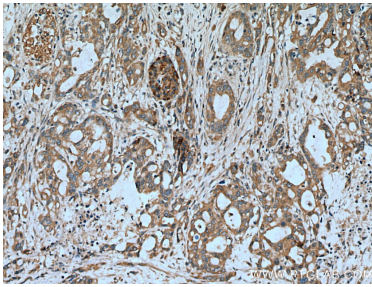
Various lysates were subjected to SDS PAGE followed by western blot with 27235-1-AP (ASIC1 antibody) at dilution of 1:500 incubated at room temperature for 1.5 hours.



Immunohistochemical analysis of paraffin-embedded human pancreas cancer tissue slide using 27235-1-AP (ASIC1 antibody) at dilution of 1:200 (under 40x lens). Heat mediated antigen retrieval with Tris-EDTA buffer (pH 9.0).



IP Result of anti-ASIC1 (IP:27235-1-AP, 4ug; Detection:27235-1-AP 1:300) with mouse brain tissue lysate 3000ug.



Immunohistochemical analysis of paraffin-embedded human pancreas cancer tissue slide using 27235-1-AP (ASIC1 antibody) at dilution of 1:200 (under 10x lens). Heat mediated antigen retrieval with Tris-EDTA buffer (pH 9.0).