

À des fins de recherche uniquement

# Anticorps Polyclonal de lapin anti-RBL2



Numéro de catalogue: 27251-1-AP

4 Publications

## Informations de base

Numéro de catalogue:

27251-1-AP

Taille:

150ul, Concentration: 800 µg/ml by Nanodrop and 400 µg/ml by Bradford method using BSA as the standard;

Hôte:

Lapin

Isotype:

IgG

Immunogen Catalog Number:

AG25087

Numéro d'acquisition GenBank:

BC034490

Identification du gène (NCBI):

5934

Nom complet:

retinoblastoma-like 2 (p130)

MW calculé

130 kDa

MW observés:

128 kDa

Méthode de purification:

Purification par affinité contre l'antigène

Dilutions recommandées:

WB 1:500-1:1000

## Applications

Applications testées:

WB, ELISA

Demandes citées:

WB

Spécificité de l'espèce:

Humain

Espèces citées:

Humain, souris

Contrôles positifs:

WB: cellules A549, cellules Raji

## Informations générales

RBL2, also named as Retinoblastoma-like protein 2 or p130, is a 1130 amino acid protein, which belongs to the retinoblastoma protein (RB) family. RBL2 is a Key regulator of entry into cell division and is directly involved in heterochromatin formation by maintaining overall chromatin structure and, in particular, that of constitutive heterochromatin by stabilizing histone methylation. RBL2 recruits and targets histone methyltransferases KMT5B and KMT5C, leading to epigenetic transcriptional repression and controls histone H4 'Lys-20' trimethylation. RBL2 probably acts as a transcription repressor by recruiting chromatin-modifying enzymes to promoters. RBL2 may act as a tumor suppressor.

## Publications notables

Autrice	Pubmed ID	Journal	Application
Xiaoman Chen	30207732	Mol Pharm	WB
Ji Young Kim	32229099	Biochem Pharmacol	WB
Ji Che	33887345	Life Sci	WB

## Stockage

Stockage:

Stocker à -20°C. Stable pendant un an après l'expédition.

Tampon de stockage:

PBS avec azote de sodium à 0,02 % et glycérol à 50 % pH 7,3

L'aliquotage n'est pas nécessaire pour le stockage à -20C

\*\*\* Les 20ul contiennent 0,1% de BSA.

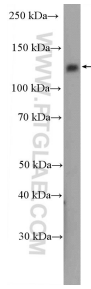
For technical support and original validation data for this product please contact:

T: 1 (888) 4PTGLAB (1-888-478-4522) (toll free in USA), or 1(312) 455-8498 (outside USA)

E: [proteintech@ptglab.com](mailto:proteintech@ptglab.com)  
W: [ptglab.com](http://ptglab.com)

This product is exclusively available under Proteintech Group brand and is not available to purchase from any other manufacturer.

## Données de validation sélectionnées



A549 cells were subjected to SDS PAGE followed by western blot with 27251-1-AP (RBL2 Antibody) at dilution of 1:600 incubated at room temperature for 1.5 hours.