

À des fins de recherche uniquement

# Anticorps Polyclonal de lapin anti-P21



Numéro de catalogue: 27296-1-AP

20 Publications

## Informations de base

<b>Numéro de catalogue:</b> 27296-1-AP	<b>Numéro d'acquisition GenBank:</b> BC000275	<b>Méthode de purification:</b> Purification par affinité contre l'antigène
<b>Taille:</b> 150ul, Concentration: 600 µg/ml by Nanodrop and 333 µg/ml by Bradford method using BSA as the standard;	<b>Identification du gène (NCBI):</b> 1026	<b>Dilutions recommandées:</b> WB 1:500-1:1000 IF 1:200-1:800
<b>Hôte:</b> Lapin	<b>Nom complet:</b> cyclin-dependent kinase inhibitor 1A (p21, Cip1)	
<b>Isotype:</b> IgG	<b>MW calculé:</b> 21 kDa	
<b>Immunogen Catalog Number:</b> AG26129	<b>MW observés:</b> 21 kDa	

## Applications

<b>Applications testées:</b> IF, WB, ELISA	<b>Contrôles positifs:</b> WB : cellules Neuro-2a, cellules C6, cellules NIH/3T3 IF : cellules MCF-7,
<b>Demands citées:</b> IF, IHC, WB	
<b>Spécificité de l'espèce:</b> rat, souris	
<b>Espèces citées:</b> canin, Humain, rat, souris	

## Informations générales

CDKN1A (p21, CIP1, WAF1) is a cyclin-dependent kinase inhibitor. CDKN1A binds to and inhibits the activity of cyclin-CDK2 or -CDK4 complexes, and thus functions as a regulator of cell cycle progression at the G1 phase. The expression of CDKN1A is induced by wild-type but not mutant p53 protein, through which CDKN1A mediates the p53-dependent cell cycle G1 phase arrest in response to a variety of stress stimuli. CDKN1A can interact with proliferating cell nuclear antigen (PCNA), and plays a regulatory role in S phase DNA replication and DNA damage repair. CDKN1A was reported to be specifically cleaved by CASP3-like caspases, which thus leads to a dramatic activation of CDK2, and may be instrumental in the execution of apoptosis following caspase activation. Two alternatively spliced variants, which encode an identical protein, have been reported.

## Publications notables

Autrice	Pubmed ID	Journal	Application
Hui-Hui Wang	36233264	Int J Mol Sci	WB
Hongzhu Li	34779492	Int J Mol Med	WB
Yuanyuan Li	36343723	Brain Res	WB

## Stockage

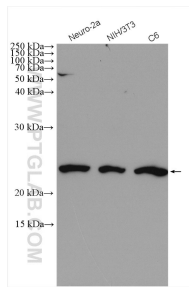
**Stockage:**  
Stocker à -20°C. Stable pendant un an après l'expédition.  
**Tampon de stockage:**  
PBS avec azoture de sodium à 0,02 % et glycérol à 50 % pH 7,3  
L'aliquotage n'est pas nécessaire pour le stockage à -20C

\*\*\* Les 20ul contiennent 0,1% de BSA.

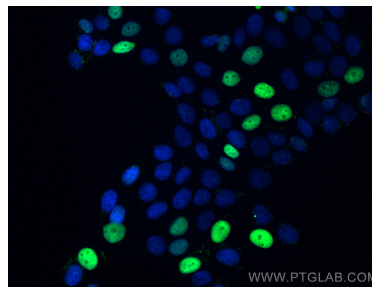
For technical support and original validation data for this product please contact:  
T: 1 (888) 4PTGLAB (1-888-478-4522) (toll free in USA), or 1(312) 455-8498 (outside USA)  
E: proteintech@ptglab.com  
W: ptglab.com

This product is exclusively available under Proteintech Group brand and is not available to purchase from any other manufacturer.

## Données de validation sélectionnées



Various lysates were subjected to SDS PAGE followed by western blot with 27296-1-AP (P21 antibody) at dilution of 1:600 incubated at room temperature for 1.5 hours.



Immunofluorescent analysis of (4% PFA) fixed MCF-7 cells using P21 antibody (27296-1-AP) at dilution of 1:400 and CoraLite®488-Conjugated AffiniPure Goat Anti-Rabbit IgG(H+L).