

À des fins de recherche uniquement

# Anticorps Polyclonal de lapin anti-ICAM2



Numéro de catalogue: 27322-1-AP

## Informations de base

<b>Numéro de catalogue:</b> 27322-1-AP	<b>Numéro d'acquisition GenBank:</b> BC003097	<b>Méthode de purification:</b> Purification par affinité contre l'antigène
<b>Taille:</b> 150ul , Concentration: 350 µg/ml by Nanodrop and 267 µg/ml by Bradford method using BSA as the standard;	<b>Identification du gène (NCBI):</b> 3384	<b>Dilutions recommandées:</b> WB 1:500-1:3000
<b>Hôte:</b> Lapin	<b>Nom complet:</b> intercellular adhesion molecule 2	
<b>Isotype:</b> IgG	<b>MW calculé:</b> 31 kDa	
<b>Immunogen Catalog Number:</b> AG25952	<b>MW observés:</b> 55-80 kDa	

## Applications

<b>Applications testées:</b> FC, WB, ELISA	<b>Contrôles positifs:</b> WB : cellules HL-60, cellules HUVEC, cellules Jurkat, tissu pulmonaire de souris
<b>Spécificité de l'espèce:</b> Humain, souris	

## Informations générales

ICAM2 is a cell adhesion protein having important roles in cell migration, especially during inflammation when leukocytes cross the endothelium. Initially described as a receptor for lymphocyte function-associated antigen-1 (LFA1), ICAM2 may play a role in lymphocyte recirculation by blocking LFA-1-dependent cell adhesion. It mediates adhesive interactions important for antigen-specific immune response, NK-cell mediated clearance, lymphocyte recirculation, and other cellular interactions important for immune response and surveillance. ICAM2 has six N-linked glycosylation sites at amino acids (asparagines) 47, 82, 105, 153, 178 and 187. This antibody got 55-80 kDa in western blotting maybe due to glycosylation.

## Stockage

**Stockage:**  
Stocker à -20°C. Stable pendant un an après l'expédition.  
**Tampon de stockage:**  
PBS avec azoture de sodium à 0,02 % et glycérol à 50 % pH 7,3  
L'aliquotage n'est pas nécessaire pour le stockage à -20C

**\*\*\* Les 20ul contiennent 0,1% de BSA.**

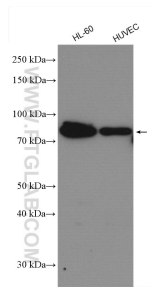
For technical support and original validation data for this product please contact:

T: 1 (888) 4PTGLAB (1-888-478-4522) (toll free in USA), or 1(312) 455-8498 (outside USA)

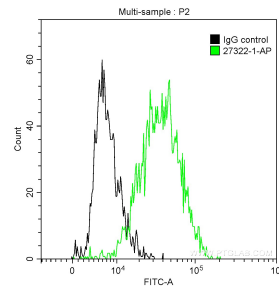
E: proteintech@ptglab.com  
W: ptglab.com

**This product is exclusively available under Proteintech Group brand and is not available to purchase from any other manufacturer.**

## Données de validation sélectionnées



Various lysates were subjected to SDS PAGE followed by western blot with 27322-1-AP (ICAM2 antibody) at dilution of 1:1500 incubated at room temperature for 1.5 hours.



1X10<sup>6</sup> HUVEC cells were stained with 0.2 ug Anti-Human ICAM2 (27322-1-AP) and CoraLite®488-Conjugated AffiniPure Goat Anti-Rabbit IgG(H+L) at dilution 1:1000 (green), and 0.2 ug Control Antibody. Cells were fixed with 90% MeOH.