

À des fins de recherche uniquement

# Anticorps Polyclonal de lapin anti-IL-1R1



Numéro de catalogue: 27348-1-AP

## Informations de base

Numéro de catalogue: 27348-1-AP	Numéro d'acquisition GenBank: BC075063	Méthode de purification: Purification par affinité contre l'antigène
Taille: 150ul , Concentration: 450 µg/ml by Nanodrop;	Identification du gène (NCBI): 3554	Dilutions recommandées: WB 1:1000-1:4000 IHC 1:250-1:1000
Hôte: Lapin	Nom complet: interleukin 1 receptor, type I	
Isotype: IgG	MW calculé: 569 aa, 65 kDa	
Immunogen Catalog Number: AG25998	MW observés: 80 kDa, 60 kDa	

## Applications

### Applications testées:

IHC, WB, ELISA

### Spécificité de l'espèce:

Humain, souris

**Remarque-IHC: il est suggéré de démasquer l'antigène avec un tampon de TE buffer pH 9,0; (\*) À défaut, 'le démasquage de l'antigène peut être effectué avec un tampon citrate pH 6,0.**

### Contrôles positifs:

WB : cellules Jurkat, cellules MOLT-4, cellules NIH/3T3, cellules Raji, tissu hépatique de souris

IHC : tissu splénique de souris, tissu d'appendicite humaine

## Informations générales

IL-1R1 (IL-1 receptor type 1, also known as p80, IL-1R-alpha or CD121a) is a 80 kDa transmembrane glycoprotein and a member of the interleukin-1 receptor family (PMID: 35163653; 29248002). It is a receptor for IL-1 $\alpha$ , IL-1 $\beta$ , and interleukin-1 receptor antagonist (IL-1Ra). IL-1 $\alpha$  and IL-1 $\beta$  interact with the extracellular domain of IL-1R1, triggering the recruitment of an accessory receptor, the IL-1RAcP, resulting in a functional receptor complex that initiates IL-1R1 signaling cascades (PMID: 35163653). IL-1Ra competes with active IL-1 and blocks binding to their common activating receptor IL-1R1 and, thus, inhibits IL-1 signaling (PMID: 35332327; 11641511). It has been reported that IL-1R1 may also bind IL-38 (PMID: 29248002). IL-1R1 expression has been found in many cell types including T cells, macrophages, neutrophils, eosinophils, basophils, mast cells, fibroblasts, and endothelial cells. IL-1R1 can be released from the cell surface following proteolytic cleavage, generating a soluble form of 55-60 kDa (PMID: 17324958).

## Stockage

### Stockage:

Stocker à -20°C. Stable pendant un an après l'expédition.

### Tampon de stockage:

PBS avec azoture de sodium à 0,02 % et glycérol à 50 % pH 7,3

L'aliquotage n'est pas nécessaire pour le stockage à -20C

\*\*\* Les 20ul contiennent 0,1% de BSA.

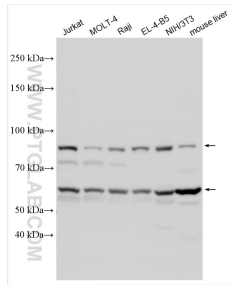
For technical support and original validation data for this product please contact:

T: 1 (888) 4PTGLAB (1-888-478-4522) (toll free in USA), or 1(312) 455-8498 (outside USA)

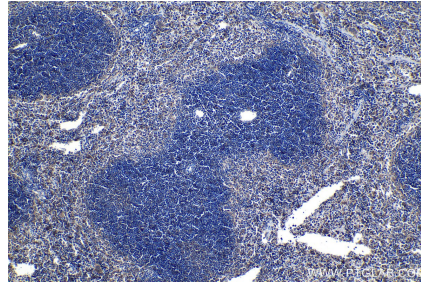
E: proteintech@ptglab.com  
W: ptglab.com

This product is exclusively available under Proteintech Group brand and is not available to purchase from any other manufacturer.

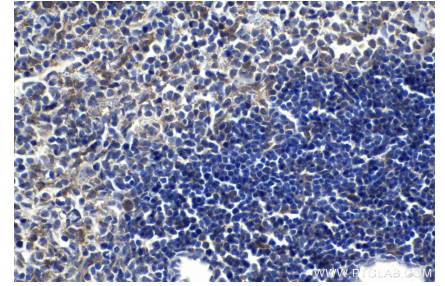
## Données de validation sélectionnées



Various lysates were subjected to SDS PAGE followed by western blot with 27348-1-AP (IL-1R1 antibody) at dilution of 1:2000 incubated at room temperature for 1.5 hours.



Immunohistochemical analysis of paraffin-embedded mouse spleen tissue slide using 27348-1-AP (IL-1R1 antibody) at dilution of 1:500 (under 10x lens). Heat mediated antigen retrieval with Tris-EDTA buffer (pH 9.0).



Immunohistochemical analysis of paraffin-embedded mouse spleen tissue slide using 27348-1-AP (IL-1R1 antibody) at dilution of 1:500 (under 40x lens). Heat mediated antigen retrieval with Tris-EDTA buffer (pH 9.0).