

À des fins de recherche uniquement

Anticorps Polyclonal de lapin anti-SEMA4A



Numéro de catalogue: 27359-1-AP **Phare**

Informations de base

Numéro de catalogue: 27359-1-AP	Numéro d'acquisition GenBank: BC020974	Méthode de purification: Purification par affinité contre l'antigène
Taille: 150ul, Concentration: 400 µg/ml by Nanodrop and 333 µg/ml by Bradford method using BSA as the standard;	Identification du gène (NCBI): 64218	Dilutions recommandées: WB 1:500-1:2000 IHC 1:50-1:500
Hôte: Lapin	Nom complet: sema domain, immunoglobulin domain (Ig), transmembrane domain (TM) and short cytoplasmic domain, (semaphorin) 4A	
Isotype: IgG	MW calculé 761 aa, 84 kDa	
Immunogen Catalog Number: AG26023	MW observés: 120-150 kDa	

Applications

Applications testées: IHC, WB, ELISA	Contrôles positifs: WB : cellules HeLa, cellules PC-3
Spécificité de l'espèce: Humain	IHC : tissu de cancer du sein humain, tissu placentaire humain
Remarque-IHC: il est suggéré de démasquer l'antigène avec un tampon de TE buffer pH 9,0; (*) À défaut, 'le démasquage de l'antigène peut être 'effectué avec un tampon citrate pH 6,0.	

Informations générales

Sema4A, the membrane-bound class 4 semaphorin, belongs to semaphorins superfamily. Sema4A functions as potent axonal repellants in the nervous system, and is involved in vascular development. Two species of Sema4A with molecular weights of about 150 and 120 kDa were observed. The antibody recognizes the Sema4A protein, which is of appropriate molecular size (~120 kDa) for the glycosylated protein (PMID: 26296689/17318185/26024919).

Stockage

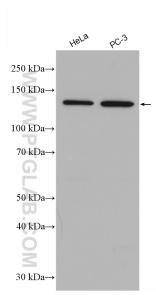
Stockage:
Stocker à -20°C. Stable pendant un an après l'expédition.
Tampon de stockage:
PBS avec azoture de sodium à 0,02 % et glycérol à 50 % pH 7,3
L'aliquotage n'est pas nécessaire pour le stockage à -20C

*** Les 20ul contiennent 0,1% de BSA.

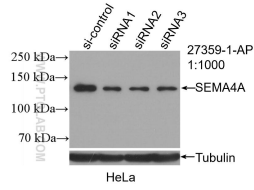
For technical support and original validation data for this product please contact:
T: 1 (888) 4PTGLAB (1-888-478-4522) (toll free in USA), or 1(312) 455-8498 (outside USA) E: proteintech@ptglab.com W: ptglab.com

This product is exclusively available under Proteintech Group brand and is not available to purchase from any other manufacturer.

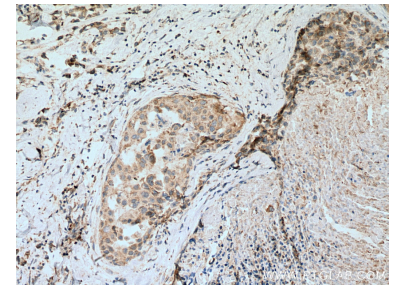
Données de validation sélectionnées



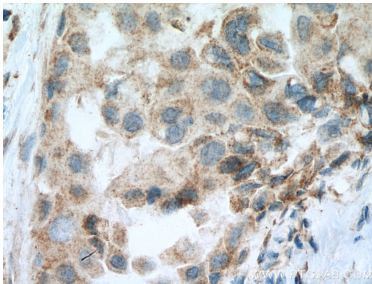
Various lysates were subjected to SDS PAGE followed by western blot with 27359-1-AP (SEMA4A antibody) at dilution of 1:1500 incubated at room temperature for 1.5 hours.



WB result of SEMA4A antibody (27359-1-AP; 1:1000; incubated at room temperature for 1.5 hours) with sh-Control and sh-SEMA4A transfected HeLa cells.



Immunohistochemical analysis of paraffin-embedded human breast cancer tissue slide using 27359-1-AP (SEMA4A antibody) at dilution of 1:200 (under 10x lens). Heat mediated antigen retrieval with Tris-EDTA buffer (pH 9.0).



Immunohistochemical analysis of paraffin-embedded human breast cancer tissue slide using 27359-1-AP (SEMA4A antibody) at dilution of 1:200 (under 40x lens). Heat mediated antigen retrieval with Tris-EDTA buffer (pH 9.0).