

À des fins de recherche uniquement

Anticorps Polyclonal de lapin anti-PDCD1LG2/PD-L2



Numéro de catalogue: 27406-1-AP

Informations de base

Numéro de catalogue: 27406-1-AP	Numéro d'acquisition GenBank: BC074766	Méthode de purification: Purification par affinité contre l'antigène
Taille: 150ul , Concentration: 450 µg/ml by Nanodrop;	Identification du gène (NCBI): 80380	Dilutions recommandées: WB 1:500-1:3000
Hôte: Lapin	Nom complet: programmed cell death 1 ligand 2	
Isotype: IgG	MW calculé: 273 aa, 31 kDa	
Immunogen Catalog Number: AG26384	MW observés: 45 kDa	

Applications

Applications testées: WB, ELISA	Contrôles positifs: WB : cellules NIH/3T3, cellules Raji, tissu cardiaque de rat, tissu cardiaque de souris
Spécificité de l'espèce: Humain, rat, souris	

Informations générales

Programmed cell death 1 ligand 2 (PDCD1LG2), also known as PD-L2, CD273 and B7-DC, is an immune checkpoint receptor ligand which plays a role in negative regulation of the adaptive immune response. PDCD1LG2/PD-L2 protein is expressed mainly by dendritic cells, macrophages, and tumor cells, and down-regulates the effector functions of T cells via PD-1/PD-L2 axis in the tumor microenvironment (PMID: 30275216). The endogenous PDCD1LG2/PD-L2 protein displays a molecular weight of 45 kDa (glycosylated form), and a minor band at 35 kDa (non-glycosylated form) in western blot (PMID: 28811964, PMID: 34697216).

Stockage

Stockage:
Stocker à -20°C. Stable pendant un an après l'expédition.
Tampon de stockage:
PBS avec azoture de sodium à 0,02 % et glycérol à 50 % pH 7,3
L'aliquotage n'est pas nécessaire pour le stockage à -20C

*** Les 20ul contiennent 0,1% de BSA.

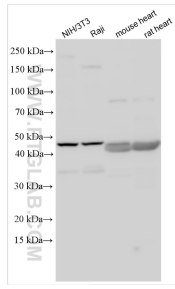
For technical support and original validation data for this product please contact:

T: 1 (888) 4PTGLAB (1-888-478-4522) (toll free in USA), or 1(312) 455-8498 (outside USA)

E: proteintech@ptglab.com
W: ptglab.com

This product is exclusively available under Proteintech Group brand and is not available to purchase from any other manufacturer.

Données de validation sélectionnées



Various lysates were subjected to SDS PAGE followed by western blot with 27406-1-AP (PDCD1L2/PD-L2 antibody) at dilution of 1:1500 incubated at room temperature for 1.5 hours.