

À des fins de recherche uniquement

Anticorps Polyclonal de lapin anti-HLA-E



Numéro de catalogue: 27411-1-AP **Phare**

Informations de base

Numéro de catalogue: 27411-1-AP	Numéro d'acquisition GenBank: BC002578	Méthode de purification: Purification par affinité contre l'antigène
Taille: 150ul , Concentration: 500 µg/ml by Nanodrop and 333 µg/ml by Bradford method using BSA as the standard;	Identification du gène (NCBI): 3133	Dilutions recommandées: WB 1:500-1:2000 IHC 1:50-1:500
Hôte: Lapin	Nom complet: major histocompatibility complex, class I, E	
Isotype: IgG	MW calculé 40 kDa	
Immunogen Catalog Number: AG26581	MW observés: 40-42 kDa	

Applications

Applications testées: IHC, WB, ELISA	Contrôles positifs:
Spécificité de l'espèce: Humain, souris	WB : tissu placentaire humain, cellules HL-60, cellules THP-1, cellules U-937
Remarque-IHC: il est suggéré de démasquer l'antigène avec un tampon de TE buffer pH 9.0; (*) À défaut, le démasquage de l'antigène peut être effectué avec un tampon citrate pH 6,0.	IHC : tissu d'amygdalite humaine, tissu splénique de souris

Informations générales

Human major histocompatibility complex (MHC) antigens, also referred to as human leukocyte antigens (HLA), are encoded by genes located on the short arm of chromosome 6 (6p21.3). There are two classes of HLA antigens: class I and class II. This class I molecules are membrane glycoproteins composed of a heavy (alpha) chain which is encoded by a HLA class I gene, and β 2-microglobulin light (beta) chain. The most extensively characterized members of the HLA class I gene family are the genes encoding the major transplantation antigens, HLA-A, B and C. HLA-E is a non-classical MHC class I molecule. HLA-E is frequently overexpressed in tumor diseases, transplants and virus-infected cells and represents an immunomodulatory molecule by binding to the receptors CD94/NKG2A, -B and -C on NK and T cells. Due to its immune suppressive features HLA-E expression might represent an important mechanism of tumors to escape immune surveillance. (PMID: 667938; 3375250; 2249951; 27589686)

Stockage

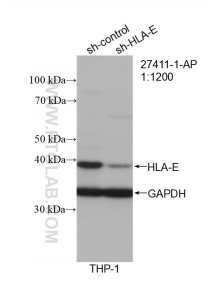
Stockage:
Stocker à -20°C. Stable pendant un an après l'expédition.
Tampon de stockage:
PBS avec azoture de sodium à 0,02 % et glycérol à 50 % pH 7,3
L'aliqotage n'est pas nécessaire pour le stockage à -20C

*** Les 20ul contiennent 0,1% de BSA.

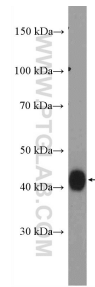
For technical support and original validation data for this product please contact:
T: 1 (888) 4PTGLAB (1-888-478-4522) (toll free in USA), or 1(312) 455-8498 (outside USA) E: proteintech@ptglab.com W: ptglab.com

This product is exclusively available under Proteintech Group brand and is not available to purchase from any other manufacturer.

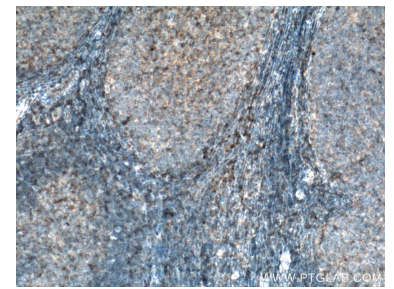
Données de validation sélectionnées



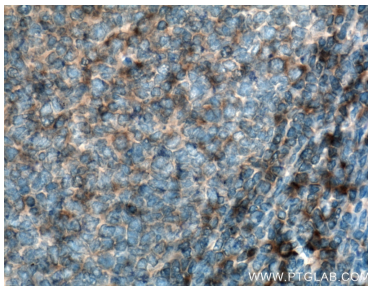
WB result of HLA-E antibody (27411-1-AP; 1:1200; incubated at room temperature for 1.5 hours) with sh-Control and sh-HLA-E transfected THP-1 cells.



human placenta tissue were subjected to SDS PAGE followed by western blot with 27411-1-AP (HLA-E antibody) at dilution of 1:1000 incubated at room temperature for 1.5 hours.



Immunohistochemical analysis of paraffin-embedded human tonsillitis tissue slide using 27411-1-AP (HLA-E antibody) at dilution of 1:200 (under 10x lens. Heat mediated antigen retrieval with Tris-EDTA buffer (pH 9.0).



Immunohistochemical analysis of paraffin-embedded human tonsillitis tissue slide using 27411-1-AP (HLA-E antibody) at dilution of 1:200 (under 40x lens. Heat mediated antigen retrieval with Tris-EDTA buffer (pH 9.0).