

À des fins de recherche uniquement

Anticorps Polyclonal de lapin anti-MIP-1 alpha/CCL3



Numéro de catalogue: 27441-1-AP

Informations de base

Numéro de catalogue: 27441-1-AP	Numéro d'acquisition GenBank: BC071834	Méthode de purification: Purification par affinité contre l'antigène
Taille: 150ul , Concentration: 300 µg/ml by Nanodrop;	Identification du gène (NCBI): 6348	Dilutions recommandées: WB 1:500-1:2000
Hôte: Lapin	Nom complet: chemokine (C-C motif) ligand 3	
Isotype: IgG	MW calculé: 92 aa, 10 kDa	
Immunogen Catalog Number: AG26764	MW observés: 10 kDa	

Applications

Applications testées: WB, ELISA	Contrôles positifs: WB : cellules THP-1,
Spécificité de l'espèce: Humain	

Informations générales

Chemokine (C-C motif) ligand 3 (CCL3), also known as MIP-1 α , belongs to the family of chemokines. CCL3 has been found in the central nervous system and its cognate receptors, CCR1 and CCR5, have been reported to be expressed by astrocytes, microglia and neurons. CCL3 and its receptors, CCR1 and CCR5, also contribute to the development of bone disease in multiple myeloma by supporting tumor growth and regulating osteoclast differentiation. CCL3 is also associated with the regulation of cell growth, angiogenesis, and metastasis of different tumors such as melanoma, renal cell carcinoma, and colorectal cancer. Moreover, CCL3 enhances cell migration and metastasis by up-regulating matrix metalloproteinase-2 (MMP)-2 expression in chondrosarcoma cells.

Stockage

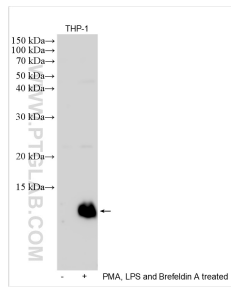
Stockage:
Stocker à -20°C. Stable pendant un an après l'expédition.
Tampon de stockage:
PBS avec azoture de sodium à 0,02 % et glycérol à 50 % pH 7,3
L'aliquotage n'est pas nécessaire pour le stockage à -20C

***** Les 20ul contiennent 0,1% de BSA.**

For technical support and original validation data for this product please contact:
T: 1 (888) 4PTGLAB (1-888-478-4522) (toll free in USA), or 1(312) 455-8498 (outside USA)
E: proteintech@ptglab.com
W: ptglab.com

This product is exclusively available under Proteintech Group brand and is not available to purchase from any other manufacturer.

Données de validation sélectionnées



PMA, LPS, and Brefeldin A treated THP-1 cells were subjected to SDS PAGE followed by western blot with 27441-1-AP (MIP 1 alpha/CCL3 antibody) at dilution of 1:1000 incubated at room temperature for 1.5 hours.