

À des fins de recherche uniquement

# Anticorps Polyclonal de lapin anti-NDNL2



Numéro de catalogue: 27488-1-AP

1 Publications

## Informations de base

Numéro de catalogue:

27488-1-AP

Taille:

150ul, Concentration: 230 µg/ml by Nanodrop and 200 µg/ml by Bradford method using BSA as the standard;

Hôte:

Lapin

Isotype:

IgG

Immunogen Catalog Number:

AG26663

Numéro d'acquisition GenBank:

BC053999

Identification du gène (NCBI):

56160

Nom complet:

necdin-like 2

MW calculé

34 kDa

MW observés:

38 kDa

Méthode de purification:

Purification par affinité contre l'antigène

Dilutions recommandées:

WB 1:500-1:2000

IHC 1:50-1:500

IF 1:50-1:500

## Applications

Applications testées:

IF, IHC, WB, ELISA

Demandes citées:

WB

Spécificité de l'espèce:

Humain

Espèces citées:

Humain

**Remarque-IHC: il est suggéré de démasquer l'antigène avec un tampon de TE buffer pH 9,0; (\*) A défaut, le démasquage de l'antigène peut être effectué avec un tampon citrate pH 6,0.**

Contrôles positifs:

WB : cellules HepG2, cellules HeLa, cellules LO2, tissu placentaire humain

IHC : tissu de cancer du foie humain,

IF : cellules HepG2,

## Informations générales

NDNL2 (also known as NSMCE3 or MAGEG1) is a part of the SMC5-6 protein complex that is essential for DNA damage response and chromosome segregation (PMID: 18086888; 27427983). The gene of human NDNL2 maps to chromosome 15q13.1. Northern blot analysis detected expression of a 1.9-kb transcript in all human tissues tested, with highest expression in testis (PMID: 11782285). Missense mutations in NSMCE3 have been associated with an autosomal recessive chromosome breakage syndrome that leads to defective T and B cell function and acute respiratory distress syndrome in early childhood (PMID: 27427983).

## Publications notables

Autrice	Pubmed ID	Journal	Application
Stephanie Pei Tung Yiu	35263599	Cell Rep	WB

## Stockage

Stockage:

Stocker à -20°C. Stable pendant un an après l'expédition.

Tampon de stockage:

PBS avec azoture de sodium à 0,02 % et glycérol à 50 % pH 7,3

L'aliquotage n'est pas nécessaire pour le stockage à -20C

\*\*\* Les 20ul contiennent 0,1% de BSA.

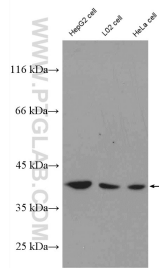
For technical support and original validation data for this product please contact:

T: 1 (888) 4PTGLAB (1-888-478-4522) (toll free in USA), or 1(312) 455-8498 (outside USA)

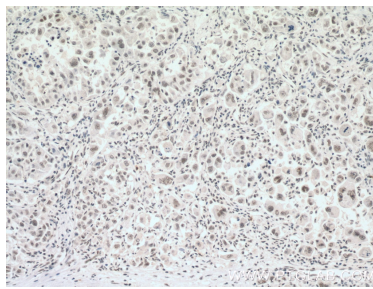
E: proteintech@ptglab.com  
W: ptglab.com

This product is exclusively available under Proteintech Group brand and is not available to purchase from any other manufacturer.

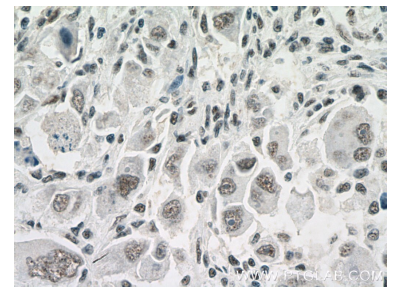
## Données de validation sélectionnées



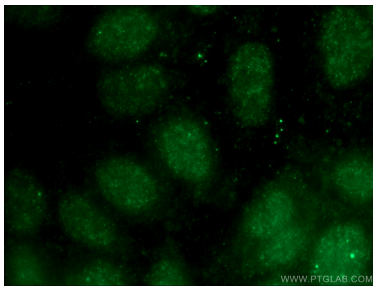
HepG2, L02 and HeLa cells were subjected to SDS PAGE followed by western blot with 27488-1-AP (NDNL2 antibody) at dilution of 1:1000 incubated at room temperature for 1.5 hours.



Immunohistochemical analysis of paraffin-embedded human liver cancer tissue slide using 27488-1-AP (NDNL2 antibody) at dilution of 1:100 (under 10x lens. Heat mediated antigen retrieval with Tris-EDTA buffer (pH 9.0).



Immunohistochemical analysis of paraffin-embedded human liver cancer tissue slide using 27488-1-AP (NDNL2 antibody) at dilution of 1:100 (under 40x lens. Heat mediated antigen retrieval with Tris-EDTA buffer (pH 9.0).



Immunofluorescent analysis of (-20°C Ethanol) fixed HepG2 cells using 27488-1-AP (NDNL2 antibody) at dilution of 1:50 and Alexa Fluor 488-conjugated AffiniPure Goat Anti-Rabbit IgG(H+L).