

À des fins de recherche uniquement

Anticorps Polyclonal de lapin anti-SLC31A1



Numéro de catalogue: 27499-1-AP

Phare

2 Publications

Informations de base

Numéro de catalogue:
27499-1-AP

Taille:
150ul, Concentration: 550 µg/ml by
Nanodrop;

Hôte:
Lapin

Isotype:
IgG

Immunogen Catalog Number:
AG26601

Numéro d'acquisition GenBank:
BC013611

Identification du gène (NCBI):
1317

Nom complet:
solute carrier family 31 (copper
transporters), member 1

MW calculé
21 kDa

MW observés:
21-25,30-35,60-70 kDa

Méthode de purification:
Purification par affinité contre
l'antigène

Dilutions recommandées:
WB 1:500-1:1000
IF 1:50-1:500

Applications

Applications testées:
FC, IF, WB, ELISA

Demandes citées:
WB

Spécificité de l'espèce:
Humain

Espèces citées:
Humain

Contrôles positifs:

WB : cellules HT-29, cellules Caco-2, cellules HeLa
IF : tissu de cancer du foie humain,

Informations générales

Publications notables

Autrice	Pubmed ID	Journal	Application
Hong Yang	36293101	Int J Mol Sci	WB
Trace M Jones	36860653	Cancer Res Commun	WB

Stockage

Stockage:

Stocker à -20°C. Stable pendant un an après l'expédition.

Tampon de stockage:

PBS avec azoture de sodium à 0,02 % et glycérol à 50 % pH 7,3

L'aliquotage n'est pas nécessaire pour le stockage à -20C

*** Les 20ul contiennent 0,1% de BSA.

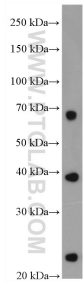
For technical support and original validation data for this product please contact:

T: 1 (888) 4PTGLAB (1-888-478-4522) (toll free
in USA), or 1(312) 455-8498 (outside USA)

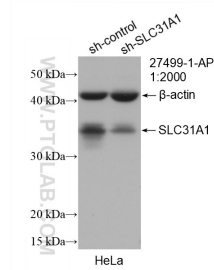
E: proteintech@ptglab.com
W: ptglab.com

This product is exclusively available under Proteintech Group brand and is not available to purchase from any other manufacturer.

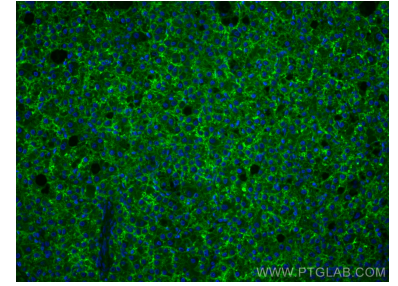
Données de validation sélectionnées



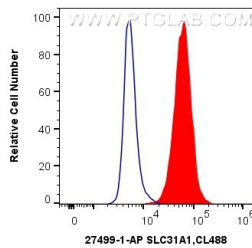
HT-29 cells were subjected to SDS PAGE followed by western blot with 27499-1-AP (SLC31A1 antibody) at dilution of 1:500 incubated at room temperature for 1.5 hours.



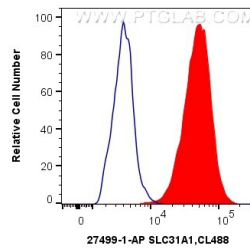
WB result of SLC31A1 antibody (27499-1-AP; 1:2000; incubated at room temperature for 1.5 hours) with sh-Control and sh-SLC31A1 transfected HeLa cells.



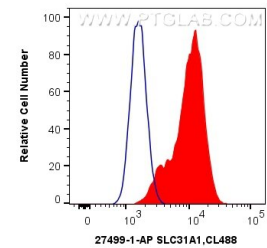
Immunofluorescent analysis of (4% PFA) fixed human liver cancer tissue using SLC31A1 antibody (27499-1-AP) at dilution of 1:200 and CoraLite®488-Conjugated AffiniPure Goat Anti-Rabbit IgG(H+L).



1X10⁶ HeLa cells were intracellularly stained with 0.4 ug Anti-Human SLC31A1 (27499-1-AP) and CoraLite®488-Conjugated AffiniPure Goat Anti-Rabbit IgG(H+L) at dilution 1:1000 (red), or 0.4 ug Control Antibody. Cells were fixed with 4% PFA and permeabilized with Flow Cytometry Perm Buffer (PF00011-C).



1X10⁶ Neuro-2a cells were intracellularly stained with 0.4 ug Anti-Human SLC31A1 (27499-1-AP) and CoraLite®488-Conjugated AffiniPure Goat Anti-Rabbit IgG(H+L) at dilution 1:1000 (red), or 0.4 ug Control Antibody. Cells were fixed with 4% PFA and permeabilized with Flow Cytometry Perm Buffer (PF00011-C).



1X10⁶ HeLa cells were surface stained with 0.4 ug Anti-Human SLC31A1 (27499-1-AP) and CoraLite®488-Conjugated AffiniPure Goat Anti-Rabbit IgG(H+L) at dilution 1:1000 (red), or 0.4 ug Control Antibody. Cells were not fixed.