

À des fins de recherche uniquement

Anticorps Polyclonal de lapin anti-IRE1; ERN1



Numéro de catalogue: 27528-1-AP

70 Publications

Informations de base

Numéro de catalogue:

27528-1-AP

Taille:

150ul, Concentration: 500 µg/ml by Nanodrop;

Hôte:

Lapin

Isotype:

IgG

Immunogen Catalog Number:

AG25580

Numéro d'acquisition GenBank:

BC130405

Identification du gène (NCBI):

2081

Nom complet:

endoplasmic reticulum to nucleus signaling 1

MW calculé

977 aa, 110 kDa

MW observés:

130 kDa

Méthode de purification:

Purification par affinité contre l'antigène

Dilutions recommandées:

WB 1:500-1:3000

IP 0.5-4.0 ug for IP and 1:500-1:1000 for WB

IHC 1:50-1:500

Applications

Applications testées:

FC, IHC, IP, WB, ELISA

Demandes citées:

IF, IHC, WB

Spécificité de l'espèce:

Humain

Espèces citées:

bovin, Humain, rat

Contrôles positifs:

WB : cellules A549, cellules LNCaP

IP : cellules A549,

IHC : tissu de cancer du pancréas humain,

Remarque-IHC: il est suggéré de démasquer l'antigène avec un tampon de TE buffer pH 9,0; (*) À défaut, le démasquage de l'antigène peut être effectué avec un tampon citrate pH 6,0.

Informations générales

Inositol-requiring enzyme 1 (IRE1) is an ER transmembrane sensor that activates the UPR to maintain the ER and cellular function. Although mammalian IRE1 promotes cell survival, it can initiate apoptosis via decay of antiapoptotic miRNAs. IRE1 contains a ribonuclease domain in its cytoplasmic region which initiates splicing reaction by direct cleavage of XBP1 mRNA at the two stem loop structures. IRE1 plays instrumental protumoral roles in several cancers, and high IRE1 activity has been associated with poorer prognoses. (PMID: 23880584, PMID: 32861679, PMID: 31875595)

Publications notables

| Autrice | Pubmed ID | Journal | Application |
|--------------|-----------|----------------------|-------------|
| Tongtong Liu | 34530836 | J Neuroinflammation | WB |
| Lin Zhang | 32963696 | Oxid Med Cell Longev | WB |
| Zixiu Liu | 34539417 | Front Pharmacol | WB |

Stockage

Stockage:

Stocker à -20°C. Stable pendant un an après l'expédition.

Tampon de stockage:

PBS avec azoture de sodium à 0,02 % et glycérol à 50 % pH 7,3

L'aliquotage n'est pas nécessaire pour le stockage à -20C

*** Les 20ul contiennent 0,1% de BSA.

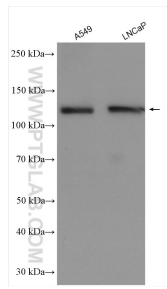
For technical support and original validation data for this product please contact:

T: 1 (888) 4PTGLAB (1-888-478-4522) (toll free in USA), or 1(312) 455-8498 (outside USA)

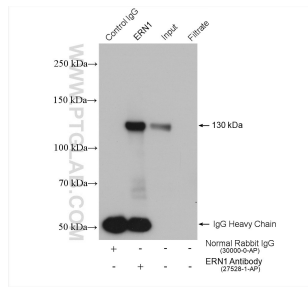
E: proteintech@ptglab.com
W: ptglab.com

This product is exclusively available under Proteintech Group brand and is not available to purchase from any other manufacturer.

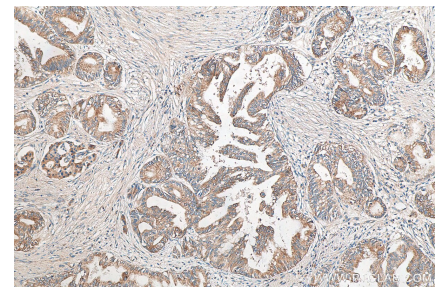
Données de validation sélectionnées



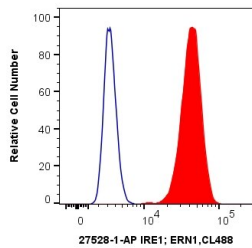
Various lysates were subjected to SDS PAGE followed by western blot with 27528-1-AP (IRE1; ERN1 antibody) at dilution of 1:1500 incubated at room temperature for 1.5 hours.



IP result of anti-IRE1; ERN1(IP:27528-1-AP, 4µg; Detection:27528-1-AP 1:500) with A549 cells lysate 600 µg.



Immunohistochemical analysis of paraffin-embedded human pancreas cancer tissue slide using 27528-1-AP (IRE1; ERN1 antibody) at dilution of 1:200 (under 10x lens).



1X10⁶ A549 cells were intracellularly stained with 0.4 µg Anti-Human IRE1; ERN1 (27528-1-AP) and CoraLite®488-Conjugated AffiniPure Goat Anti-Rabbit IgG(H+L) at dilution 1:1000 (red), or 0.4 µg Control Antibody. Cells were fixed with 4% PFA and permeabilized with Flow Cytometry Perm Buffer (PF00011-C).