

À des fins de recherche uniquement

# Anticorps Polyclonal de lapin anti-CTSS



Numéro de catalogue: 27538-1-AP

## Informations de base

Numéro de catalogue: 27538-1-AP	Numéro d'acquisition GenBank: BC002642	Méthode de purification: Purification par affinité contre l'antigène
Taille: 150ul, Concentration: 130 µg/ml by Nanodrop;	Identification du gène (NCBI): 1520	Dilutions recommandées: WB 1:1000-1:4000
Hôte: Lapin	Nom complet: cathepsin S	
Isotype: IgG	MW calculé 37 kDa	
Immunogen Catalog Number: AG25881	MW observés: 25 kDa, 37 kDa	

## Applications

Applications testées: WB, ELISA	Contrôles positifs: WB : cellules HUVEC, cellules MG U-87, cellules THP-1
Spécificité de l'espèce: Humain	

## Informations générales

Cathepsin S (CTSS) is a cysteine protease that plays an important role in extracellular matrix degradation and remodeling, antigen presentation, inflammation, and angiogenesis; it has been identified as a radiation response gene. In malignant tumors, CTSS induces tumor proliferation, invasion and metastasis through various mechanisms. CTSS proteins could be detected in two forms, pro-CTSS (35-37 kDa) and active CTSS (25 kDa) (PMID: 30006610, PMID: 34208434). And in this publication, it was also reported that active CTSS was expressed at higher levels than pro-CTSS in the lysate (PMID: 34208434).

## Stockage

Stockage:  
Stocker à -20°C. Stable pendant un an après l'expédition.  
Tampon de stockage:  
PBS avec azoture de sodium à 0,02 % et glycérol à 50 % pH 7,3  
L'aliquotage n'est pas nécessaire pour le stockage à -20C

\*\*\* Les 20ul contiennent 0,1% de BSA.

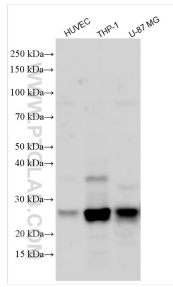
For technical support and original validation data for this product please contact:

T: 1 (888) 4PTGLAB (1-888-478-4522) (toll free in USA), or 1(312) 455-8498 (outside USA)

E: [proteintech@ptglab.com](mailto:proteintech@ptglab.com)  
W: [ptglab.com](http://ptglab.com)

This product is exclusively available under Proteintech Group brand and is not available to purchase from any other manufacturer.

## Données de validation sélectionnées



Various lysates were subjected to SDS PAGE followed by western blot with 27538-1-AP (CTSS antibody) at dilution of 1:2000 incubated at room temperature for 1.5 hours.