

À des fins de recherche uniquement

Anticorps Polyclonal de lapin anti-SCN2A



Numéro de catalogue: 27551-1-AP

Informations de base

Numéro de catalogue: 27551-1-AP	Numéro d'acquisition GenBank: NM_001040142	Méthode de purification: Purification par affinité contre l'antigène
Taille: 150ul , Concentration: 200 µg/ml by Nanodrop;	Identification du gène (NCBI): 6326	Dilutions recommandées: WB 1:500-1:2000
Hôte: Lapin	Nom complet: sodium channel, voltage-gated, type II, alpha subunit	
Isotype: IgG	MW calculé 228 kDa	
Immunogen Catalog Number: AG26022	MW observés: ~250 kDa	

Applications

Applications testées: WB, ELISA	Contrôles positifs: WB : cellules HEK-293,
Spécificité de l'espèce: Humain, souris	

Informations générales

The Sodium Channel, Voltage-Gated, Type II, Alpha (SCN2A) gene encodes the neuronal sodium channel NaV1.2. There are two major developmentally regulated splice isoforms of NaV1.2 that use mutually exclusive copies of the fifth coding exon and differ by one amino acid at position 209: Asparagine (Asn/N) vs. Aspartic acid (Asp/D). NaV1.2 is one of several sodium channels involved in initiation and propagation of action potentials in neurons. It's widely expressed throughout the human central nervous system, but not in peripheral tissues. (PMID: 29691040)

Stockage

Stockage:
Stocker à -20°C. Stable pendant un an après l'expédition.
Tampon de stockage:
PBS avec azoture de sodium à 0,02 % et glycérol à 50 % pH 7,3
L'aliquotage n'est pas nécessaire pour le stockage à -20C

***** Les 20ul contiennent 0,1% de BSA.**

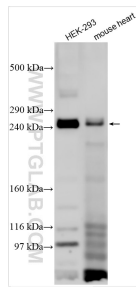
For technical support and original validation data for this product please contact:

T: 1 (888) 4PTGLAB (1-888-478-4522) (toll free in USA), or 1(312) 455-8498 (outside USA)

E: proteintech@ptglab.com
W: ptglab.com

This product is exclusively available under Proteintech Group brand and is not available to purchase from any other manufacturer.

Données de validation sélectionnées



Various lysates were subjected to SDS PAGE followed by western blot with 27551-1-AP (SCN2A antibody) at dilution of 1:1000 incubated at room temperature for 1.5 hours.