

À des fins de recherche uniquement

Anticorps Polyclonal de lapin anti-Calsequestrin 2



Numéro de catalogue: 27560-1-AP

Informations de base

Numéro de catalogue:
27560-1-AP

Taille:
150ul, Concentration: 600 µg/ml by Nanodrop and 333 µg/ml by Bradford method using BSA as the standard;

Hôte:
Lapin

Isotype:
IgG

Immunogen Catalog Number:
AG26412

Numéro d'acquisition GenBank:
BC022288

Identification du gène (NCBI):
845

Nom complet:
calsequestrin 2 (cardiac muscle)

MW calculé
46 kDa

MW observés:
50 kDa

Méthode de purification:
Purification par affinité contre l'antigène

Dilutions recommandées:
WB 1:1000-1:4000
IP 0.5-4.0 ug for IP and 1:500-1:2000 for WB
IHC 1:50-1:500

Applications

Applications testées:
IHC, IP, WB, ELISA

Spécificité de l'espèce:
Humain, rat, souris

Remarque-IHC: il est suggéré de démasquer l'antigène avec un tampon de TE buffer pH 9.0; (*) À défaut, le démasquage de l'antigène peut être effectué avec un tampon citrate pH 6.0.

Contrôles positifs:

WB : tissu cardiaque de souris,

IP : tissu cardiaque de souris,

IHC : tissu cardiaque humain, tissu de muscle squelettique humain

Informations générales

Calsequestrin 2 (CASQ2) specifies the cardiac muscle family member of the calsequestrin family. Calsequestrin is localized to the sarcoplasmic reticulum in cardiac and slow skeletal muscle cells. CASQ2 is an important component of calcium handling as a calcium storage protein in the sarcoplasmic reticulum (SR), playing an important role in the regulation of the cardiac ryanodine receptor (RyR2)-mediated calcium release and SR calcium release refractoriness. Mutations in CASQ2 cause stress-induced polymorphic ventricular tachycardia, also referred to as catecholaminergic polymorphic ventricular tachycardia 2 (CPVT2), a disease characterized by bidirectional ventricular tachycardia that may lead to cardiac arrest.

Stockage

Stockage:

Stocker à -20°C. Stable pendant un an après l'expédition.

Tampon de stockage:

PBS avec azoture de sodium à 0,02 % et glycérol à 50 % pH 7,3

L'aliquotage n'est pas nécessaire pour le stockage à -20C

*** Les 20ul contiennent 0,1% de BSA.

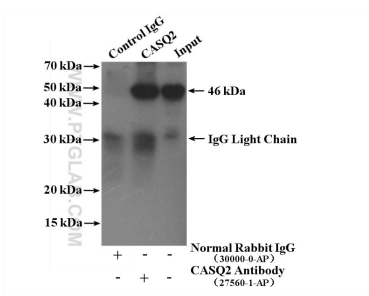
For technical support and original validation data for this product please contact:

T: 1 (888) 4PTGLAB (1-888-478-4522) (toll free in USA), or 1(312) 455-8498 (outside USA)

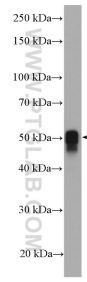
E: proteintech@ptglab.com
W: ptglab.com

This product is exclusively available under Proteintech Group brand and is not available to purchase from any other manufacturer.

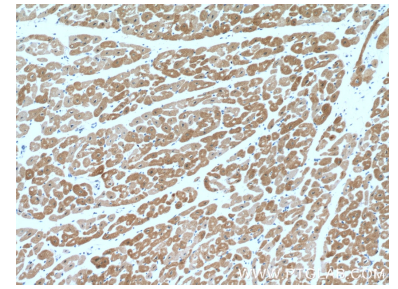
Données de validation sélectionnées



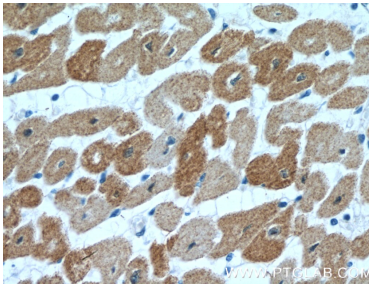
IP result of anti-Calsequestrin 2 (IP:27560-1-AP, 4ug; Detection:27560-1-AP 1:1.000) with mouse heart tissue lysate 3720 ug.



mouse heart tissue were subjected to SDS PAGE followed by western blot with 27560-1-AP (Calsequestrin 2 antibody) at dilution of 1:2000 incubated at room temperature for 1.5 hours.



Immunohistochemical analysis of paraffin-embedded human heart tissue slide using 27560-1-AP (Calsequestrin 2 antibody) at dilution of 1:200 (under 10x lens).



Immunohistochemical analysis of paraffin-embedded human heart tissue slide using 27560-1-AP (Calsequestrin 2 antibody) at dilution of 1:200 (under 40x lens).