

À des fins de recherche uniquement

Anticorps Polyclonal de lapin anti-GLUT5



Numéro de catalogue: 27571-1-AP

Phare

6 Publications

Informations de base

Numéro de catalogue: 27571-1-AP	Numéro d'acquisition GenBank: BC001820	Méthode de purification: Purification par affinité contre l'antigène
Taille: 150ul, Concentration: 150 µg/ml by Nanodrop and 133 µg/ml by Bradford method using BSA as the standard;	Identification du gène (NCBI): 6518	Dilutions recommandées: WB 1:500-1:2000 IHC 1:50-1:500
Hôte: Lapin	Nom complet: solute carrier family 2 (facilitated glucose/fructose transporter), member 5	
Isotype: IgG	MW calculé 55 kDa	
Immunogen Catalog Number: AG25682	MW observés: 48-70 kDa	

Applications

Applications testées:

IHC, WB, ELISA

Demandes citées:

IHC, WB

Spécificité de l'espèce:

Humain, rat, souris

Espèces citées:

Humain, souris

Remarque-IHC: il est suggéré de démasquer l'antigène avec un tampon de TE buffer pH 9,0; (*) A défaut, 'le démasquage de l'antigène peut être effectué avec un tampon citrate pH 6,0.

Contrôles positifs:

WB : cellules Caco-2, cellules A549, tissu cérébral de souris, tissu rénal de souris, tissu testiculaire de rat

IHC : tissu de cancer du sein humain, tissu de cancer du poumon humain

Informations générales

GLUT5, also known as SLC2A5, is a fructose transporter expressed on the apical border of enterocytes in the small intestine. GLUT5 allows for fructose to be transported from the intestinal lumen into the enterocyte by facilitated diffusion due to fructose's high concentration in the intestinal lumen (PMID: 12750891). GLUT5 is also expressed in skeletal muscle, testis, kidney, fat tissue (adipocytes), and brain (PMID: 9781312, 18398011).

Publications notables

Autrice	Pubmed ID	Journal	Application
Yu Zhang	35777901	J Adv Res	WB
Kai Aoki	34065342	Nutrients	WB
Hu Hua	33598642	iScience	WB

Stockage

Stockage:

Stocker à -20°C. Stable pendant un an après l'expédition.

Tampon de stockage:

PBS avec azoture de sodium à 0,02 % et glycérol à 50 % pH 7,3

L'aliquotage n'est pas nécessaire pour le stockage à -20C

*** Les 20ul contiennent 0,1% de BSA.

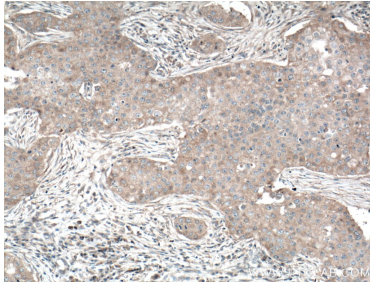
For technical support and original validation data for this product please contact:

T: 1 (888) 4PTGLAB (1-888-478-4522) (toll free in USA), or 1(312) 455-8498 (outside USA)

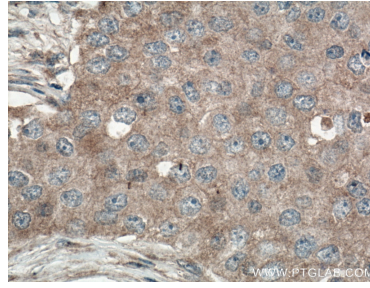
E: proteintech@ptglab.com
W: ptglab.com

This product is exclusively available under Proteintech Group brand and is not available to purchase from any other manufacturer.

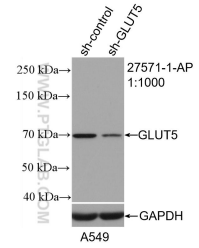
Données de validation sélectionnées



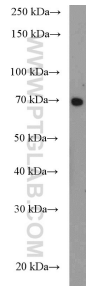
Immunohistochemical analysis of paraffin-embedded human breast cancer tissue slide using 27571-1-AP (GLUT5 antibody) at dilution of 1:200 (under 10x lens. Heat mediated antigen retrieval with Tris-EDTA buffer (pH 9.0)).



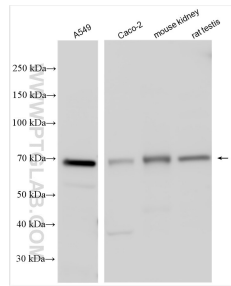
Immunohistochemical analysis of paraffin-embedded human breast cancer tissue slide using 27571-1-AP (GLUT5 antibody) at dilution of 1:200 (under 40x lens. Heat mediated antigen retrieval with Tris-EDTA buffer (pH 9.0)).



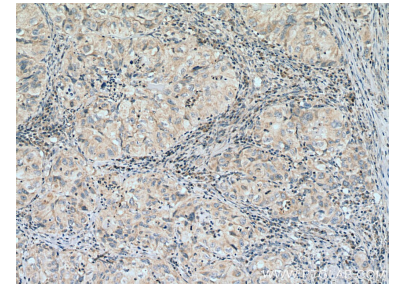
WB result of GLUT5 antibody (27571-1-AP; 1:1000; incubated at room temperature for 1.5 hours) with sh-Control and sh-GLUT5 transfected A549 cells.



Caco-2 cells were subjected to SDS PAGE followed by western blot with 27571-1-AP (GLUT5 antibody) at dilution of 1:1000 incubated at room temperature for 1.5 hours.



Various lysates were subjected to SDS PAGE followed by western blot with 27571-1-AP (GLUT5 antibody) at dilution of 1:800 incubated at room temperature for 1.5 hours.



Immunohistochemical analysis of paraffin-embedded human lung cancer tissue slide using 27571-1-AP (GLUT5 antibody) at dilution of 1:200 (under 10x lens). Heat mediated antigen retrieval with Tris-EDTA buffer (pH 9.0).