

À des fins de recherche uniquement

# Anticorps Polyclonal de lapin anti-SLC6A19



Numéro de catalogue: 27575-1-AP

## Informations de base

<b>Numéro de catalogue:</b> 27575-1-AP	<b>Numéro d'acquisition GenBank:</b> BC148801	<b>Méthode de purification:</b> Purification par affinité contre l'antigène
<b>Taille:</b> 150ul , Concentration: 650 µg/ml by Nanodrop;	<b>Identification du gène (NCBI):</b> 340024	<b>Dilutions recommandées:</b> WB 1:500-1:1000
<b>Hôte:</b> Lapin	<b>Nom complet:</b> solute carrier family 6 (neutral amino acid transporter), member 19	
<b>Isotype:</b> IgG	<b>MW calculé:</b> 634 aa, 71 kDa	
<b>Immunogen Catalog Number:</b> AG24362	<b>MW observés:</b> 71 kDa	

## Applications

**Applications testées:**  
WB, ELISA

**Spécificité de l'espèce:**  
Humain, souris

**Contrôles positifs:**

WB : cellules Caco-2, cellules PC-3, tissu d'intestin grêle de souris, tissu rénal de souris

## Informations générales

SLC6A19, also named as B0AT1, encodes system B(0) transmembrane protein that mediates epithelial resorption of neutral amino acids across the apical membrane in kidney and intestine (PubMed: 15044460). The protein contains 634 amino acids and has 12 predicted transmembrane regions with highly expression in human kidney and small intestine and minimal in pancreas (PubMed: 15286787). The expression of SLC6A19 in intestinal cells depends on angiotensin converting enzyme 2 which is the cellular receptor for SARS-CoV-2 (PubMed: 32132184). Mutations in SLC6A19 cause Hartnup disease (PMID: 15286787, PMID: 15286788).

## Stockage

**Stockage:**  
Stocker à -20°C. Stable pendant un an après l'expédition.

**Tampon de stockage:**  
PBS avec azoture de sodium à 0,02 % et glycérol à 50 % pH 7,3  
L'aliquotage n'est pas nécessaire pour le stockage à -20C

\*\*\* Les 20ul contiennent 0,1% de BSA.

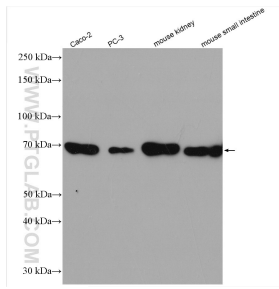
For technical support and original validation data for this product please contact:

T: 1 (888) 4PTGLAB (1-888-478-4522) (toll free in USA), or 1(312) 455-8498 (outside USA)

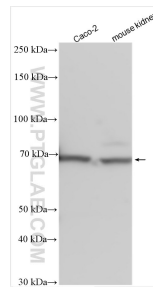
E: [proteintech@ptglab.com](mailto:proteintech@ptglab.com)  
W: [ptglab.com](http://ptglab.com)

This product is exclusively available under Proteintech Group brand and is not available to purchase from any other manufacturer.

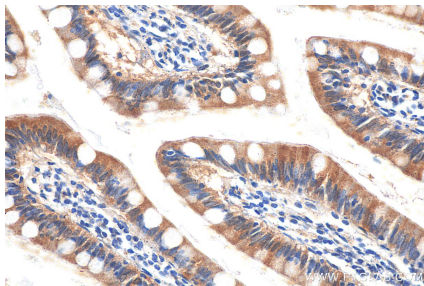
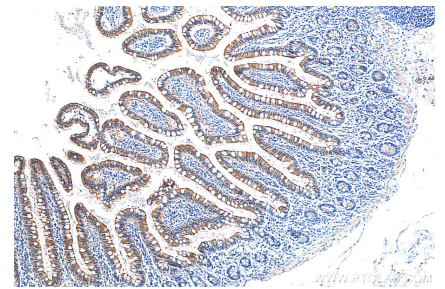
## Données de validation sélectionnées



Various lysates were subjected to SDS PAGE followed by western blot with 27575-1-AP (SLC6A19 antibody) at dilution of 1:500 incubated at room temperature for 1.5 hours.



Various lysates were subjected to SDS PAGE followed by western blot with 27575-1-AP (SLC6A19 antibody) at dilution of 1:1000 incubated at room temperature for 1.5 hours.



Immunohistochemical analysis of paraffin-embedded human small intestine tissue slide using 27575-1-AP (SLC6A19 antibody) at dilution of 1:800 (under 40x lens).