

À des fins de recherche uniquement

Anticorps Polyclonal de lapin anti-TERT



Numéro de catalogue: 27586-1-AP

Informations de base

Numéro de catalogue: 27586-1-AP	Numéro d'acquisition GenBank: NM_001193376	Méthode de purification: Purification par affinité contre l'antigène
Taille: 150ul , Concentration: 200 µg/ml by Nanodrop;	Identification du gène (NCBI): 7015	Dilutions recommandées: WB 1:500-1:1000
Hôte: Lapin	Nom complet: telomerase reverse transcriptase	
Isotype: IgG	MW calculé: 127 kDa	
Immunogen Catalog Number: AG26270	MW observés: ~100 kDa	

Applications

Applications testées: WB, ELISA	Contrôles positifs: WB : tissu pulmonaire de souris, tissu pulmonaire de rat
Spécificité de l'espèce: Humain, rat, souris	

Informations générales

Telomerase reverse transcriptase (TERT) is a catalytic subunit of telomerase. TERT plays a key role in cancer formation, ensuring chromosomal stability by maintaining telomere length, and allowing cells to avert senescence. It constitutes a limiting factor for formation of the telomerase complex in cancer cells. TERT is one of two major components of the larger telomerase complex, which extends telomeres by adding specific short repetitive DNA sequences. Telomerase is a ribonucleoprotein enzyme essential for the replication of chromosome termini in most eukaryotes. Active in progenitor and cancer cells. Inactive, or very low activity, in normal somatic cells. The calculated MW of TERT is 127 kDa, 27586-1-AP can detect a band around 100 kDa.

Stockage

Stockage:
Stocker à -20°C. Stable pendant un an après l'expédition.
Tampon de stockage:
PBS avec azoture de sodium à 0,02 % et glycérol à 50 % pH 7,3
L'aliquotage n'est pas nécessaire pour le stockage à -20C

***** Les 20ul contiennent 0,1% de BSA.**

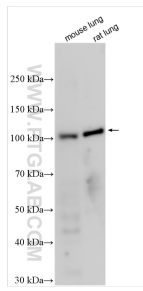
For technical support and original validation data for this product please contact:

T: 1 (888) 4PTGLAB (1-888-478-4522) (toll free in USA), or 1(312) 455-8498 (outside USA)

E: proteintech@ptglab.com
W: ptglab.com

This product is exclusively available under Proteintech Group brand and is not available to purchase from any other manufacturer.

Données de validation sélectionnées



Various lysates were subjected to SDS PAGE followed by western blot with 27586-1-AP (TERT antibody) at dilution of 1:500 incubated at room temperature for 1.5 hours.