

À des fins de recherche uniquement

Anticorps Polyclonal de lapin anti-TREM2



Numéro de catalogue: 27599-1-AP

3 Publications

Informations de base

Numéro de catalogue:

27599-1-AP

Taille:

150ul, Concentration: 550 µg/ml by Nanodrop;

Hôte:

Lapin

Isotype:

IgG

Immunogen Catalog Number:

AG26319

Numéro d'acquisition GenBank:

BC032362

Identification du gène (NCBI):

54209

Nom complet:

triggering receptor expressed on myeloid cells 2

MW calculé

222 aa, 25 kDa

MW observés:

38 kDa

Méthode de purification:

Purification par affinité contre l'antigène

Dilutions recommandées:

WB 1:500-1:2000

Applications

Applications testées:

FC, WB, ELISA

Demandes citées:

IF, WB

Spécificité de l'espèce:

Humain

Espèces citées:

Humain, souris

Contrôles positifs:

WB : cellules MKN-45, cellules THP-1

Informations générales

TREM2 (triggering receptor expressed on myeloid cells 2) is a cell surface receptor belongs to TREM family that is expressed on osteoclast, dendritic cells, macrophages, nature killers, neutrophils and microglia (PMID: 19302484). TREM2 is localized predominantly in the Golgi complex, but also shuttles to and from the cell surface in endocytic and exocytic vesicles (PMID: 16675145). TREM2 associates with DAP12 to initiate the intracellular signalling cascade via an immunoreceptor tyrosine-based activation motif (ITAM) domain and tyrosine-kinases (PMID: 23977213).

Publications notables

Autrice	Pubmed ID	Journal	Application
Wen-Jin Chen	35017463	Cell Death Dis	IF
Rui Sun	37172094	Sci Adv	WB
Hongmu Li	37187751	Front Immunol	IF

Stockage

Stockage:

Stocker à -20°C. Stable pendant un an après l'expédition.

Tampon de stockage:

PBS avec azoture de sodium à 0,02 % et glycérol à 50 % pH 7,3

L'aliquotage n'est pas nécessaire pour le stockage à -20C

*** Les 20ul contiennent 0,1% de BSA.

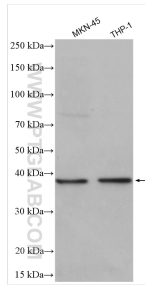
For technical support and original validation data for this product please contact:

T: 1 (888) 4PTGLAB (1-888-478-4522) (toll free in USA), or 1(312) 455-8498 (outside USA)

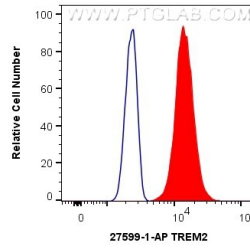
E: proteintech@ptglab.com
W: ptglab.com

This product is exclusively available under Proteintech Group brand and is not available to purchase from any other manufacturer.

Données de validation sélectionnées



Various lysates were subjected to SDS PAGE followed by western blot with 27599-1-AP (TREM2 antibody) at dilution of 1:1000 incubated at room temperature for 1.5 hours.



1X10⁶ BV-2 cells were intracellularly stained with 0.4 ug Anti-Human TREM2 (27599-1-AP) and CoraLite®488-Conjugated AffiniPure Goat Anti-Rabbit IgG(H+L) at dilution 1:1000 (red), or 0.4 ug Isotype Control. Cells were fixed with 4% PFA and permeabilized with Flow Cytometry Perm Buffer (PF00011-C).