

À des fins de recherche uniquement

Anticorps Polyclonal de lapin anti-CRTC1



Numéro de catalogue: 27647-1-AP

1 Publications

Informations de base

Numéro de catalogue:

27647-1-AP

Taille:

150ul, Concentration: 900 µg/ml by Nanodrop and 400 µg/ml by Bradford method using BSA as the standard;

Hôte:

Lapin

Isotype:

IgG

Immunogen Catalog Number:

AG26494

Numéro d'acquisition GenBank:

BC017075

Identification du gène (NCBI):

23373

Nom complet:

CREB regulated transcription coactivator 1

MW calculé

67 kDa

MW observés:

68-75 kDa

Méthode de purification:

Purification par affinité contre l'antigène

Dilutions recommandées:

WB 1:500-1:2000

Applications

Applications testées:

WB, ELISA

Demandes citées:

WB

Spécificité de l'espèce:

Humain, souris

Espèces citées:

Humain

Contrôles positifs:

WB: cellules Neuro-2a, cellules HEK-293T, cellules HeLa

Informations générales

CRTC1, also named as Transducer of CREB protein 1, is a 634 amino acid protein, which belongs to the TORC family. CRTC1 is highly expressed in adult and fetal brain and is low expressed in other tissues such as heart, spleen, lung, skeletal muscle, salivary gland, ovary and kidney. CRTC1 localizes in Cytoplasm when is phosphorylated by SIK or AMPK and when sequestered by 14-3-3 proteins (PubMed:16817901). it translocates to the nucleus on Ser-151 dephosphorylation, instigated by a number of factors including calcium ion and cAMP levels. CRTC1 as a Transcriptional coactivator for CREB1 which activates transcription through both consensus and variant cAMP response element (CRE) sites. The calculated molecular weight of CRTC1 is 68 kDa, but the modified protein is about 70-75 kDa.

Publications notables

Autrice	Pubmed ID	Journal	Application
Lei Qiang	32866426	Autophagy	WB

Stockage

Stockage:

Stocker à -20°C. Stable pendant un an après l'expédition.

Tampon de stockage:

PBS avec azoture de sodium à 0,02 % et glycérol à 50 % pH 7,3

L'aliquotage n'est pas nécessaire pour le stockage à -20C

*** Les 20ul contiennent 0,1% de BSA.

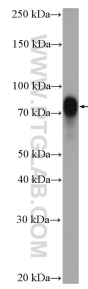
For technical support and original validation data for this product please contact:

T: 1 (888) 4PTGLAB (1-888-478-4522) (toll free in USA), or 1(312) 455-8498 (outside USA)

E: proteintech@ptglab.com
W: ptglab.com

This product is exclusively available under Proteintech Group brand and is not available to purchase from any other manufacturer.

Données de validation sélectionnées



Neuro-2a cells were subjected to SDS PAGE followed by western blot with 27647-1-AP (CRTC1 antibody) at dilution of 1:1000 incubated at room temperature for 1.5 hours.