

À des fins de recherche uniquement

Anticorps Polyclonal de lapin anti-RSL1D1



Numéro de catalogue: 27667-1-AP

Informations de base

Numéro de catalogue: 27667-1-AP	Numéro d'acquisition GenBank: BC112228	Méthode de purification: Purification par affinité contre l'antigène
Taille: 150ul , Concentration: 450 µg/ml by Nanodrop;	Identification du gène (NCBI): 26156	Dilutions recommandées: WB 1:500-1:3000 IHC 1:200-1:800
Hôte: Lapin	Nom complet: ribosomal L1 domain containing 1	
Isotype: IgG	MW calculé: 490 aa, 55 kDa	
Immunogen Catalog Number: AG24923	MW observés: 55-70 kDa	

Applications

Applications testées:
IHC, WB, ELISA

Spécificité de l'espèce:
Humain

Remarque-IHC: il est suggéré de démasquer l'antigène avec un tampon de TE buffer pH 9,0; (*) À défaut, 'le démasquage de l'antigène peut être effectué avec un tampon citrate pH 6,0.

Contrôles positifs:

WB : cellules U-251, cellules HCT 116, cellules HEK-293, cellules HepG2, cellules K-562, cellules PC-3, cellules SW480

IHC : tissu de côlon de souris,

Informations générales

RL1D1, Ribosomal L1 domain-containing protein 1, also named CSIG, a member of the universal ribosomal protein uL1 family. RL1D1 regulates cellular senescence through inhibition of PTEN translation. It acts as a pro-apoptotic regulator in response to DNA damage (PMID: 18678645, PMID: 22419112). RSL1D1 promoted the progression of colorectal cancer through RAN-mediated autophagy suppression. RSL1D1 can be detected 70 kDa (PMID:35013134).

Stockage

Stockage:

Stocker à -20°C. Stable pendant un an après l'expédition.

Tampon de stockage:

PBS avec azoture de sodium à 0,02 % et glycérol à 50 % pH 7,3

L'aliquotage n'est pas nécessaire pour le stockage à -20C

*** Les 20ul contiennent 0,1% de BSA.

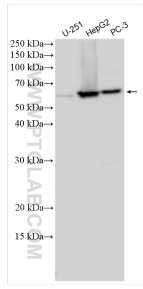
For technical support and original validation data for this product please contact:

T: 1 (888) 4PTGLAB (1-888-478-4522) (toll free in USA), or 1(312) 455-8498 (outside USA)

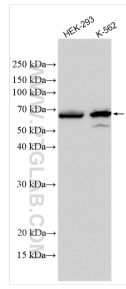
E: proteintech@ptglab.com
W: ptglab.com

This product is exclusively available under Proteintech Group brand and is not available to purchase from any other manufacturer.

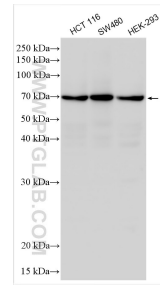
Données de validation sélectionnées



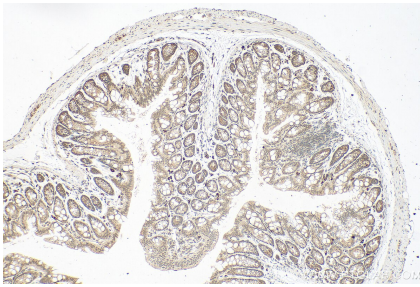
Various lysates were subjected to SDS PAGE followed by western blot with 27667-1-AP (RSL1D1 antibody) at dilution of 1:1500 incubated at room temperature for 1.5 hours.



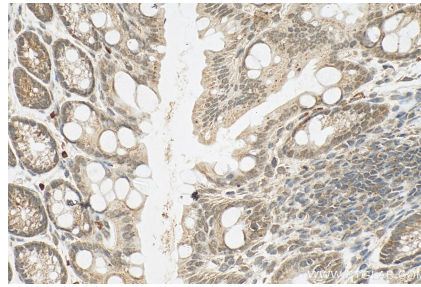
Various lysates were subjected to SDS PAGE followed by western blot with 27667-1-AP (RSL1D1 antibody) at dilution of 1:1500 incubated at room temperature for 1.5 hours.



Various lysates were subjected to SDS PAGE followed by western blot with 27667-1-AP (RSL1D1 antibody) at dilution of 1:2000 incubated at room temperature for 1.5 hours.



Immunohistochemical analysis of paraffin-embedded mouse colon tissue slide using 27667-1-AP (RSL1D1 antibody) at dilution of 1:400 (under 10x lens). Heat mediated antigen retrieval with Tris-EDTA buffer (pH 9.0).



Immunohistochemical analysis of paraffin-embedded mouse colon tissue slide using 27667-1-AP (RSL1D1 antibody) at dilution of 1:400 (under 40x lens). Heat mediated antigen retrieval with Tris-EDTA buffer (pH 9.0).