

À des fins de recherche uniquement

Anticorps Polyclonal de lapin anti-SF3B1



Numéro de catalogue: 27684-1-AP

Phare

4 Publications

Informations de base

Numéro de catalogue:

27684-1-AP

Numéro d'acquisition GenBank:

NM_012433

Méthode de purification:

Purification par affinité contre l'antigène

Taille:

150ul, Concentration: 1000 µg/ml by Nanodrop and 467 µg/ml by Bradford method using BSA as the standard;

Identification du gène (NCBI):

23451

Dilutions recommandées:

WB 1:1000-1:6000

Hôte:

Lapin

Nom complet:

splicing factor 3b, subunit 1, 155kDa

Isotype:

IgG

MW calculé

146 kDa

MW observés:

146-150 kDa

Immunogen Catalog Number:

AG26689

Applications

Applications testées:

WB, ELISA

Contrôles positifs:

WB : cellules MCF-7, cellules HeLa, cellules U2OS

Demandes citées:

WB

Spécificité de l'espèce:

Humain

Espèces citées:

Humain

Informations générales

SF3B1, also named as SAP155, is a 1304 amino acid protein, which belongs to the SF3B1 family. SF3B1 is a subunit of the splicing factor SF3B required for 'A' complex assembly formed by the stable binding of U2 snRNP to the branchpoint sequence (BPS) in pre-mRNA. Sequence independent binding of SF3A/SF3B complex upstream of the branch site is essential, it may anchor U2 snRNP to the pre-mRNA. SF3B1 may also be involved in the assembly of the 'E' complex. SF3B1 belongs also to the minor U12-dependent spliceosome, which is involved in the splicing of rare class of nuclear pre-mRNA intron.

Publications notables

Autrice	Pubmed ID	Journal	Application
Zixiang Wang	36271053	Nat Commun	WB
Yapu Li	33319461	EMBO Rep	WB
Tetsuro Ochi	36028755	Sci Rep	WB

Stockage

Stockage:

Stocker à -20°C. Stable pendant un an après l'expédition.

Tampon de stockage:

PBS avec azoture de sodium à 0,02 % et glycérol à 50 % pH 7,3

L'aliquotage n'est pas nécessaire pour le stockage à -20C

*** Les 20ul contiennent 0,1% de BSA.

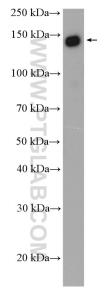
For technical support and original validation data for this product please contact:

T: 1 (888) 4PTGLAB (1-888-478-4522) (toll free in USA), or 1(312) 455-8498 (outside USA)

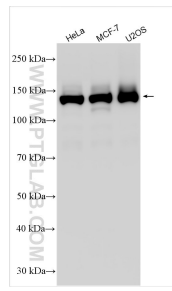
E: proteintech@ptglab.com
W: ptglab.com

This product is exclusively available under Proteintech Group brand and is not available to purchase from any other manufacturer.

Données de validation sélectionnées



MCF-7 cells were subjected to SDS PAGE followed by western blot with 27684-1-AP (SF3B1 antibody) at dilution of 1:3000 incubated at room temperature for 1.5 hours.



Various lysates were subjected to SDS PAGE followed by western blot with 27684-1-AP (SF3B1 antibody) at dilution of 1:10000 incubated at room temperature for 1.5 hours.