

À des fins de recherche uniquement

# Anticorps Polyclonal de lapin anti-PRDM2



Numéro de catalogue: 27718-1-AP

## Informations de base

<b>Numéro de catalogue:</b> 27718-1-AP	<b>Numéro d'acquisition GenBank:</b> NM_001007257	<b>Méthode de purification:</b> Purification par affinité contre l'antigène
<b>Taille:</b> 150ul , Concentration: 900 µg/ml by Nanodrop and 467 µg/ml by Bradford method using BSA as the standard;	<b>Identification du gène (NCBI):</b> 7799	<b>Dilutions recommandées:</b> WB 1:200-1:1000
<b>Hôte:</b> Lapin	<b>Nom complet:</b> PR domain containing 2, with ZNF domain	
<b>Isotype:</b> IgG	<b>MW calculé:</b> 189 kDa	
<b>Immunogen Catalog Number:</b> AG26769	<b>MW observés:</b> 250-280 kDa	

## Applications

<b>Applications testées:</b> WB, ELISA	<b>Contrôles positifs:</b> WB : cellules HeLa,
<b>Spécificité de l'espèce:</b> Humain	

## Informations générales

PRDM2, also named as KMT8, RIZ, is a 1718 amino acid protein, which belongs to the class V-like SAM-binding methyltransferase superfamily. PRDM2 localizes in the nucleus and is highly expressed in retinoblastoma cell lines and in brain tumors and is also expressed in a number of other cell lines and in brain, heart, skeletal muscle, liver and spleen. Isoform 1 is expressed in testis at much higher level than isoform 3. PRDM2 as a S-adenosyl-L-methionine-dependent histone methyltransferase that specifically methylates 'Lys-9' of histone H3. May function as a DNA-binding transcription factor. The calculated molecular weight of PRDM2 is about 189 kDa. PRDM2 exists some isoforms with 250 kDa and 280 kDa. (PMID: 26040698)

## Stockage

**Stockage:**  
Stocker à -20°C. Stable pendant un an après l'expédition.  
**Tampon de stockage:**  
PBS avec azoture de sodium à 0,02 % et glycérol à 50 % pH 7,3  
L'aliquotage n'est pas nécessaire pour le stockage à -20C

**\*\*\* Les 20ul contiennent 0,1% de BSA.**

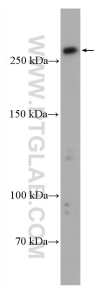
For technical support and original validation data for this product please contact:

T: 1 (888) 4PTGLAB (1-888-478-4522) (toll free in USA), or 1(312) 455-8498 (outside USA)

E: [proteintech@ptglab.com](mailto:proteintech@ptglab.com)  
W: [ptglab.com](http://ptglab.com)

**This product is exclusively available under Proteintech Group brand and is not available to purchase from any other manufacturer.**

## Données de validation sélectionnées



HeLa cells were subjected to SDS PAGE followed by western blot with 27718-1-AP (PRDM2 antibody) at dilution of 1:300 incubated at room temperature for 1.5 hours.