

À des fins de recherche uniquement

# Anticorps Polyclonal de lapin anti-TMCO1



Numéro de catalogue: 27757-1-AP

## Informations de base

<b>Numéro de catalogue:</b> 27757-1-AP	<b>Numéro d'acquisition GenBank:</b> NM_019026	<b>Méthode de purification:</b> Purification par affinité contre l'antigène
<b>Taille:</b> 150ul , Concentration: 400 µg/ml by Nanodrop and 267 µg/ml by Bradford method using BSA as the standard;	<b>Identification du gène (NCBI):</b> 54499	<b>Dilutions recommandées:</b> WB 1:200-1:1000
<b>Hôte:</b> Lapin	<b>Nom complet:</b> transmembrane and coiled-coil domains 1	
<b>Isotype:</b> IgG	<b>MW calculé:</b> 21 kDa	
<b>Immunogen Catalog Number:</b> AG26278	<b>MW observés:</b> 21 kDa	

## Applications

<b>Applications testées:</b> WB, ELISA	<b>Contrôles positifs:</b> WB : cellules A549, cellules L02
<b>Spécificité de l'espèce:</b> Humain	

## Informations générales

TMCO1, also known as TMCC4, PNAS-10, and PNAS-136, is a 188 amino acid protein, which is Widely expressed in adult and fetal tissues, with higher levels in thymus, prostate, testis and small intestine and lower levels in brain, placenta, lung and kidney (PubMed:10393320, PubMed:20018682). TMCO1 as a Calcium-selective channel is required to prevent calcium stores from overfilling, thereby playing a key role in calcium homeostasis (PubMed:27212239). In response to endoplasmic reticulum overloading, TMCO1, assembles into a homotetramer, forming a functional calcium-selective channel, regulating the calcium content in endoplasmic reticulum store (PubMed:27212239).

## Stockage

**Stockage:**  
Stocker à -20°C. Stable pendant un an après l'expédition.  
**Tampon de stockage:**  
PBS avec azoture de sodium à 0,02 % et glycérol à 50 % pH 7,3  
L'aliquotage n'est pas nécessaire pour le stockage à -20C

**\*\*\* Les 20ul contiennent 0,1% de BSA.**

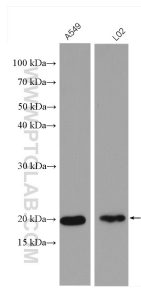
For technical support and original validation data for this product please contact:

T: 1 (888) 4PTGLAB (1-888-478-4522) (toll free in USA), or 1(312) 455-8498 (outside USA)

E: [proteintech@ptglab.com](mailto:proteintech@ptglab.com)  
W: [ptglab.com](http://ptglab.com)

**This product is exclusively available under Proteintech Group brand and is not available to purchase from any other manufacturer.**

## Données de validation sélectionnées



Various lysates were subjected to SDS PAGE followed by western blot with 27757-1-AP (TMCO1 antibody) at dilution of 1:300 incubated at room temperature for 1.5 hours.