

À des fins de recherche uniquement

Anticorps Polyclonal de lapin anti-YTHDC2



Numéro de catalogue: 27779-1-AP

Phare

16 Publications

Informations de base

Numéro de catalogue:

27779-1-AP

Taille:

150ul, Concentration: 800 µg/ml by Nanodrop;

Hôte:

Lapin

Isotype:

IgG

Immunogen Catalog Number:

AG26690

Numéro d'acquisition GenBank:

BC137285

Identification du gène (NCBI):

64848

Nom complet:

YTH domain containing 2

MW observés:

160 kDa

Méthode de purification:

Purification par affinité contre l'antigène

Dilutions recommandées:

WB 1:1000-1:8000

IF 1:50-1:500

Applications

Applications testées:

IF, WB, ELISA

Demandes citées:

IF, IP, WB

Spécificité de l'espèce:

Humain, souris

Espèces citées:

Humain, porc, rat, souris

Contrôles positifs:

WB : cellules HepG2, cellules BxPC-3, cellules HeLa, cellules MCF-7, cellules MDA-MB-231, tissu testiculaire de souris

IF : cellules HepG2,

Informations générales

YTHDC2, also named as Probable ATP-dependent RNA helicase YTHDC2, is a 1430 amino acid protein, which belongs to the DEAD box helicase family. YTHDC2 specifically recognizes and binds N6-methyladenosine (m6A)-containing RNAs. M6A is a modification present at internal sites of mRNAs and some non-coding RNAs and plays a role in the efficiency of mRNA splicing, processing and stability.

Publications notables

Autrice	Pubmed ID	Journal	Application
Kusuma Suphakhong	36183833	J Biol Chem	WB
Hao Sheng	31504235	Carcinogenesis	WB
Lingfang Wang	36288717	Cell Rep	WB

Stockage

Stockage:

Stocker à -20°C. Stable pendant un an après l'expédition.

Tampon de stockage:

PBS avec azoture de sodium à 0,02 % et glycérol à 50 % pH 7,3

L'aliquotage n'est pas nécessaire pour le stockage à -20C

*** Les 20ul contiennent 0,1% de BSA.

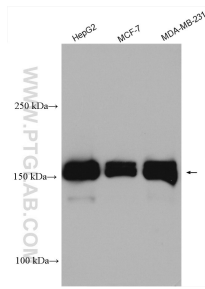
For technical support and original validation data for this product please contact:

T: 1 (888) 4PTGLAB (1-888-478-4522) (toll free in USA), or 1(312) 455-8498 (outside USA)

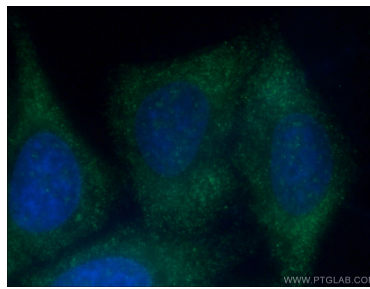
E: proteintech@ptglab.com
W: ptglab.com

This product is exclusively available under Proteintech Group brand and is not available to purchase from any other manufacturer.

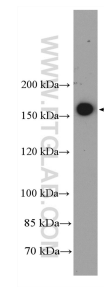
Données de validation sélectionnées



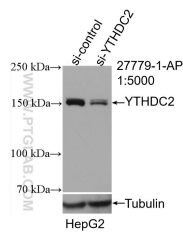
Various lysates were subjected to SDS PAGE followed by western blot with 27779-1-AP (YTHDC2 antibody) at dilution of 1:4000 incubated at room temperature for 1.5 hours.



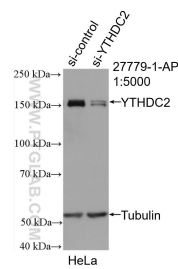
Immunofluorescent analysis of (-20°C Ethanol) fixed HepG2 cells using 27779-1-AP (YTHDC2 antibody) at dilution of 1:50 and Alexa Fluor 488-conjugated AffiniPure Goat Anti-Rabbit IgG(H+L).



HepG2 cells were subjected to SDS PAGE followed by western blot with 27779-1-AP (YTHDC2 antibody) at dilution of 1:600 incubated at room temperature for 1.5 hours.



WB result of YTHDC2 antibody (27779-1-AP; 1:5000; incubated at room temperature for 1.5 hours) with sh-Control and sh-YTHDC2 transfected HepG2 cells.



WB result of YTHDC2 antibody (27779-1-AP; 1:5000; incubated at room temperature for 1.5 hours) with sh-Control and sh-YTHDC2 transfected HeLa cells.