

À des fins de recherche uniquement

Anticorps Polyclonal de lapin anti-RanBP1



Numéro de catalogue: 27804-1-AP

2 Publications

Informations de base

Numéro de catalogue:

27804-1-AP

Taille:

150ul , Concentration: 1000 µg/ml by Nanodrop and 533 µg/ml by Bradford method using BSA as the standard;

Hôte:

Lapin

Isotype:

IgG

Immunogen Catalog Number:

AG25714

Numéro d'acquisition GenBank:

Identification du gène (NCBI):

5902

Nom complet:

RAN binding protein 1

MW observés:

28 kDa

Méthode de purification:

Purification par affinité contre l'antigène

Dilutions recommandées:

WB 1:1000-1:6000

IHC 1:400-1:1600

IF 1:50-1:500

Applications

Applications testées:

IF, IHC, WB, ELISA

Demandes citées:

IF, WB

Spécificité de l'espèce:

Humain, souris

Espèces citées:

Humain

Remarque-IHC: il est suggéré de démasquer l'antigène avec un tampon de TE buffer pH 9,0; (*) A défaut, 'le démasquage de l'antigène peut être 'effectué avec un tampon citrate pH 6,0.

Contrôles positifs:

WB : tissu testiculaire de souris, cellules 3T3-L1, cellules HEK-293, cellules HeLa, cellules NIH/3T3, cellules RAW 264.7, tissu cérébral de souris, tissu cérébral humain foetal

IHC : tissu testiculaire de souris,

IF : cellules NIH/3T3, cellules HeLa

Informations générales

RanBP1 (Ran-binding protein 1) belongs to the RANBP1 family. RanBP1 plays a role in RAN-dependent nucleocytoplasmic transport. It alleviates the TNPO1-dependent inhibition of RAN GTPase activity and mediates the dissociation of RAN from proteins involved in transport into the nucleus. And RanBP1 induces a conformation change in the complex formed by XPO1 and RAN that triggers the release of the nuclear export signal of cargo proteins (PMID:20485264). RanBP1 promotes dissociation of RAN from a complex with KPNA2 and CSE1L. It required for normal mitotic spindle assembly and normal progress through mitosis via its effect on RAN (PMID:17671426). Also, RanBP1 inhibits RCC1-dependent exchange of RAN-bound GDP by GTP (PMID:7882974, PMID:7616957).

Publications notables

Autrice	Pubmed ID	Journal	Application
Yuqin Lei	33974430	J Med Chem	IF
Yuling Li	31021318	Elife	WB

Stockage

Stockage:

Stocker à -20°C. Stable pendant un an après l'expédition.

Tampon de stockage:

PBS avec azoture de sodium à 0,02 % et glycérol à 50 % pH 7,3

L'aliquotage n'est pas nécessaire pour le stockage à -20C

*** Les 20ul contiennent 0,1% de BSA.

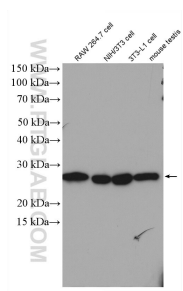
For technical support and original validation data for this product please contact:

T: 1 (888) 4PTGLAB (1-888-478-4522) (toll free in USA), or 1(312) 455-8498 (outside USA)

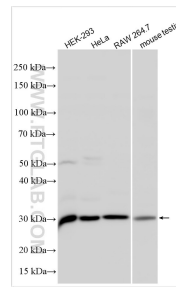
E: proteintech@ptglab.com
W: ptglab.com

This product is exclusively available under Proteintech Group brand and is not available to purchase from any other manufacturer.

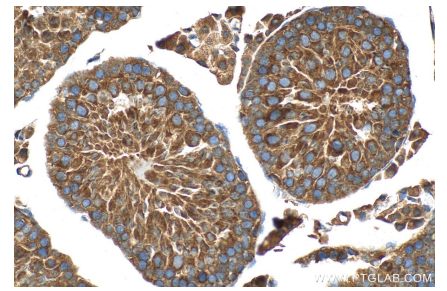
Données de validation sélectionnées



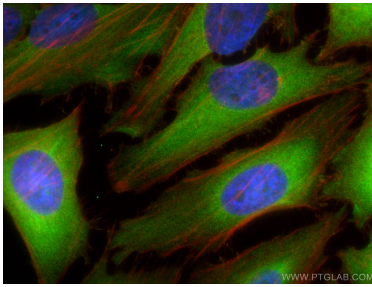
Various lysates were subjected to SDS PAGE followed by western blot with 27804-1-AP (RanBP1 antibody) at dilution of 1:3000 incubated at room temperature for 1.5 hours.



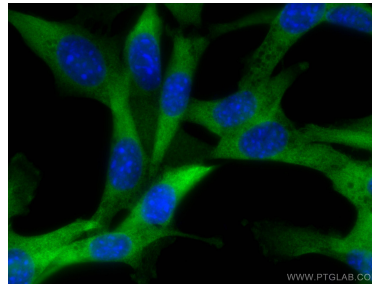
Various lysates were subjected to SDS PAGE followed by western blot with 27804-1-AP (RanBP1 antibody) at dilution of 1:4000 incubated at room temperature for 1.5 hours.



Immunohistochemical analysis of paraffin-embedded mouse testis tissue slide using 27804-1-AP (RanBP1 antibody) at dilution of 1:800 (under 40x lens). Heat mediated antigen retrieval with Tris-EDTA buffer (pH 9.0).



Immunofluorescent analysis of (4% PFA) fixed HeLa cells using RanBP1 antibody (27804-1-AP) at dilution of 1:200 and Coralite@488-Conjugated AffiniPure Goat Anti-Rabbit IgG(H+L), CL594-Phalloidin (red).



Immunofluorescent analysis of (4% PFA) fixed NIH/3T3 cells using RanBP1 antibody (27804-1-AP) at dilution of 1:200 and Coralite@488-Conjugated AffiniPure Goat Anti-Rabbit IgG(H+L).