

À des fins de recherche uniquement

Anticorps Polyclonal de lapin anti-MDM2



Numéro de catalogue: 27883-1-AP

Phare

11 Publications

Informations de base

Numéro de catalogue: 27883-1-AP	Numéro d'acquisition GenBank: NM_001145337.2	Méthode de purification: Purification par affinité contre l'antigène
Taille: 150ul , Concentration: 700 µg/ml by Nanodrop and 367 µg/ml by Bradford method using BSA as the standard;	Identification du gène (NCBI): 4193	Dilutions recommandées: WB 1:500-1:3000
Hôte: Lapin	Nom complet: Mdm2 p53 binding protein homolog (mouse)	
Isotype: IgG	MW calculé 55 kDa	
Immunogen Catalog Number: AG27255	MW observés: 75-85 kDa	

Applications

Applications testées: FC, WB, ELISA	Contrôles positifs: WB : cellules MCF-7, cellules A431, cellules T-47D
Demandes citées: IF, IHC, WB	
Spécificité de l'espèce: Humain	
Espèces citées: Humain, rat, souris	

Informations générales

MDM2, also known as HDM2, is a protein of the E3 ubiquitin-ligase family. MDM2 is recognized as a proto-oncogene and is over-expressed in a wide range of human malignancies including soft tissue carcinomas and breast cancer. MDM2 can bind to the p53 tumor suppressor protein with high affinity, and negatively regulates p53 by mediating its ubiquitination and proteosomal degradation (PMID: 17000718). MDM2 has some isoforms with calculated molecular mass of 25-55kD, but always can be detected as 90-97kD. In addition to full length MDM2, two lower bands (85kD and 75kD) are often observed which are likely to be produced by translation initiation at methionine codons 50 and 60. Another isoform of MDM2 is often observed as 57-60kD in cell lines which is indeed a caspase cleavage product of MDM2 at residue 361 (PMID: 19565011, 9840926, 7689721).

Publications notables

Autrice	Pubmed ID	Journal	Application
Mingzhe Zheng	36434180	Oncogene	WB,IHC,IF
Hidemichi Kouzu	35316214	J Clin Invest	WB
Lei Shi	35072515	Mol Cell Biol	WB

Stockage

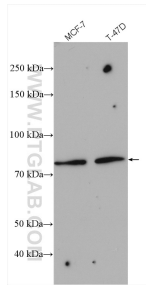
Stockage:
Stocker à -20°C. Stable pendant un an après l'expédition.
Tampon de stockage:
PBS avec azoture de sodium à 0,02 % et glycérol à 50 % pH 7,3
L'aliquotage n'est pas nécessaire pour le stockage à -20C

***** Les 20ul contiennent 0,1% de BSA.**

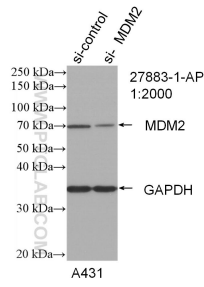
For technical support and original validation data for this product please contact:
T: 1 (888) 4PTGLAB (1-888-478-4522) (toll free in USA), or 1(312) 455-8498 (outside USA)
E: proteintech@ptglab.com
W: ptglab.com

This product is exclusively available under Proteintech Group brand and is not available to purchase from any other manufacturer.

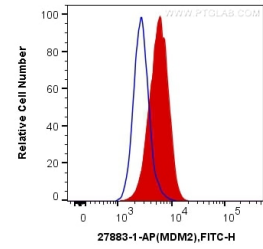
Données de validation sélectionnées



Various lysates were subjected to SDS PAGE followed by western blot with 27883-1-AP (MDM2 antibody) at dilution of 1:2000 incubated at room temperature for 1.5 hours.



WB result of MDM2 antibody (27883-1-AP; 1:2000; incubated at room temperature for 1.5 hours) with sh-Control and sh-MDM2 transfected A431 cells.



1×10^6 HeLa cells were intracellularly stained with 0.2 μ g Anti-Human MDM2 (27883-1-AP) and CoraLite@488-Conjugated AffiniPure Goat Anti-Rabbit IgG(H+L) at dilution 1:1000 (red), or 0.2 μ g Control Antibody. Cells were fixed with 4% PFA and permeabilized with Flow Cytometry Perm Buffer (PF00011-C).