

À des fins de recherche uniquement

Anticorps Polyclonal de lapin anti-GRIA1



Numéro de catalogue: 27885-1-AP

Informations de base

| | | | | | |
|---------------------------|----------------------------------------------|--------------------------------|----------------------------------------|--------------------------|---------------------------------------------|
| Numéro de catalogue: | 27885-1-AP | Numéro d'acquisition GenBank: | BC111734 | Méthode de purification: | Purification par affinité contre l'antigène |
| Taille: | 150ul, Concentration: 800 µg/ml by Nanodrop; | Identification du gène (NCBI): | 2890 | Dilutions recommandées: | WB 1:1000-1:4000 |
| Hôte: | Lapin | Nom complet: | glutamate receptor, ionotropic, AMPA 1 | | |
| Isotype: | IgG | MW calculé | 906 aa, 102 kDa | | |
| Immunogen Catalog Number: | AG27295 | MW observés: | 102 kDa | | |

Applications

Applications testées:
WB, ELISA
Spécificité de l'espèce:
Humain, porc, souris

Contrôles positifs:
WB : tissu cérébral de souris, tissu cérébral de porc, tissu cérébral de rat

Informations générales

Glutamate receptors are the predominant excitatory neurotransmitter receptors in the mammalian brain and are activated in a variety of normal neurophysiologic processes. These receptors are heteromeric protein complexes with multiple subunits, each possessing transmembrane regions, and all arranged to form a ligand-gated ion channel. The classification of glutamate receptors is based on their activation by different pharmacologic agonists. This gene belongs to a family of alpha-amino-3-hydroxy-5-methyl-4-isoxazole propionate (AMPA) receptors.

Stockage

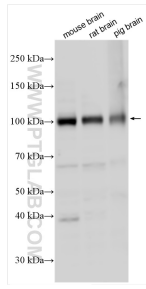
Stockage:
Stocker à -20°C. Stable pendant un an après l'expédition.
Tampon de stockage:
PBS avec azoture de sodium à 0,02 % et glycérol à 50 % pH 7,3
L'aliquotage n'est pas nécessaire pour le stockage à -20C

***** Les 20ul contiennent 0,1% de BSA.**

For technical support and original validation data for this product please contact:
T: 1 (888) 4PTGLAB (1-888-478-4522) (toll free in USA), or 1(312) 455-8498 (outside USA) E: proteintech@ptglab.com W: ptglab.com

This product is exclusively available under Proteintech Group brand and is not available to purchase from any other manufacturer.

Données de validation sélectionnées



Various lysates were subjected to SDS PAGE followed by western blot with 27885-1-AP (GRIA1 antibody) at dilution of 1:2000 incubated at room temperature for 1.5 hours.