

À des fins de recherche uniquement

Anticorps Polyclonal de lapin anti-NAP1L4



Numéro de catalogue: 27889-1-AP **Phare**

Informations de base

Numéro de catalogue: 27889-1-AP	Numéro d'acquisition GenBank: BC022090	Méthode de purification: Purification par affinité contre l'antigène
Taille: 150ul , Concentration: 600 µg/ml by Nanodrop and 400 µg/ml by Bradford method using BSA as the standard;	Identification du gène (NCBI): 4676	Dilutions recommandées: WB 1:500-1:2000
Hôte: Lapin	Nom complet: nucleosome assembly protein 1-like 4	
Isotype: IgG	MW calculé: 375 aa, 43 kDa	
Immunogen Catalog Number: AG27469	MW observés: 52 kDa	

Applications

Applications testées: WB, ELISA	Contrôles positifs: WB : cellules HeLa, cellules HuH-7, cellules U2OS, tissu cardiaque de rat, tissu cardiaque de souris, tissu testiculaire de souris
Spécificité de l'espèce: Humain, rat, souris	

Informations générales

NAP1L4 is a member of the nucleosome assembly protein (NAP) family which can interact with both core and linker histones. It can shuttle between the cytoplasm and nucleus, suggesting a role as a histone chaperone. This gene is one of several located near the imprinted gene domain of 11p15.5, an important tumor-suppressor gene region. Alterations in this region have been associated with the Beckwith-Wiedemann syndrome, Wilms tumor, rhabdomyosarcoma, adrenocortical carcinoma, and lung, ovarian, and breast cancer.

Stockage

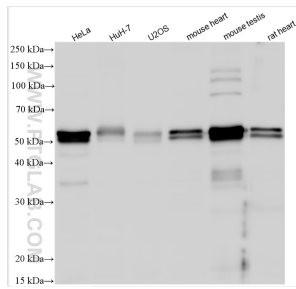
Stockage:
Stocker à -20°C. Stable pendant un an après l'expédition.
Tampon de stockage:
PBS avec azoture de sodium à 0,02 % et glycérol à 50 % pH 7,3
L'aliquotage n'est pas nécessaire pour le stockage à -20C

***** Les 20ul contiennent 0,1% de BSA.**

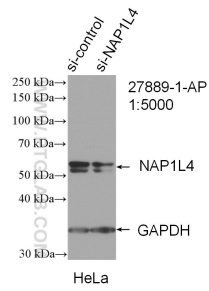
For technical support and original validation data for this product please contact:
T: 1 (888) 4PTGLAB (1-888-478-4522) (toll free in USA), or 1(312) 455-8498 (outside USA) E: proteintech@ptglab.com W: ptglab.com

This product is exclusively available under Proteintech Group brand and is not available to purchase from any other manufacturer.

Données de validation sélectionnées



Various lysates were subjected to SDS PAGE followed by western blot with 27889-1-AP (NAP1L4 antibody) at dilution of 1:1000 incubated at room temperature for 1.5 hours.



WB result of NAP1L4 antibody (27889-1-AP; 1:5000; incubated at room temperature for 1.5 hours) with sh-Control and sh-NAP1L4 transfected HeLa cells.