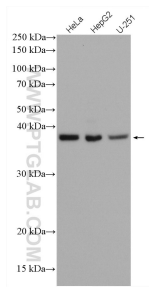
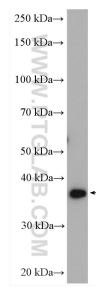


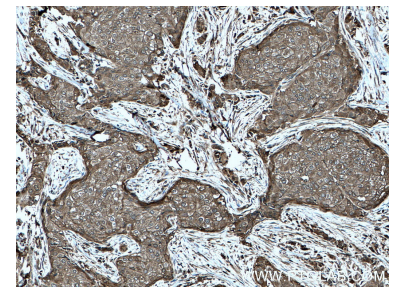
Données de validation sélectionnées



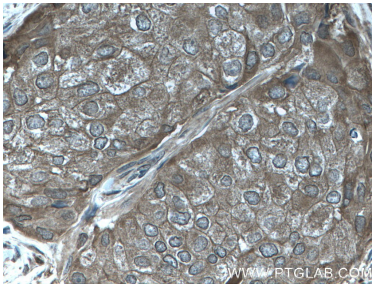
Various lysates were subjected to SDS PAGE followed by western blot with 27926-1-AP (C19orf62 antibody) at dilution of 1:3000 incubated at room temperature for 1.5 hours.



HepG2 cells were subjected to SDS PAGE followed by western blot with 27926-1-AP (C19orf62 antibody) at dilution of 1:4000 incubated at room temperature for 1.5 hours.



Immunohistochemical analysis of paraffin-embedded human breast cancer tissue slide using 27926-1-AP (C19orf62 antibody) at dilution of 1:500 (under 10x lens. Heat mediated antigen retrieval with Tris-EDTA buffer (pH 9.0).



Immunohistochemical analysis of paraffin-embedded human breast cancer tissue slide using 27926-1-AP (C19orf62 antibody) at dilution of 1:500 (under 40x lens. Heat mediated antigen retrieval with Tris-EDTA buffer (pH 9.0).