

À des fins de recherche uniquement

# Anticorps Polyclonal de lapin anti-WNT1



Numéro de catalogue: 27935-1-AP

Phare

28 Publications

## Informations de base

Numéro de catalogue:  
27935-1-AP

Taille:  
150ul, Concentration: 450 µg/ml by Nanodrop and 300 µg/ml by Bradford method using BSA as the standard;

Hôte:  
Lapin

Isotype:  
IgG

Immunogen Catalog Number:  
AG27380

Numéro d'acquisition GenBank:  
BC074799

Identification du gène (NCBI):  
7471

Nom complet:  
wingless-type MMTV integration site family, member 1

MW observés:  
41 kDa

Méthode de purification:  
Purification par affinité contre l'antigène

Dilutions recommandées:  
WB 1:500-1:2000

## Applications

Applications testées:  
FC, WB, ELISA

Demandes citées:  
IF, IHC, WB

Spécificité de l'espèce:  
Humain, souris

Espèces citées:  
Humain, rat, souris

Contrôles positifs:

WB : cellules 3T3-L1, cellules HepG2, cellules Jurkat, cellules NIH/3T3

## Informations générales

### Publications notables

Autrice	Pubmed ID	Journal	Application
Zhenyi Han	32032294	Transplantation	WB
Shulei Gong	31661124	Int J Mol Med	WB
Asmita Bhattacharya	36238898	iScience	WB

## Stockage

Stockage:

Stocker à -20°C. Stable pendant un an après l'expédition.

Tampon de stockage:

PBS avec azoture de sodium à 0,02 % et glycérol à 50 % pH 7,3

L'aliquotage n'est pas nécessaire pour le stockage à -20C

\*\*\* Les 20ul contiennent 0,1% de BSA.

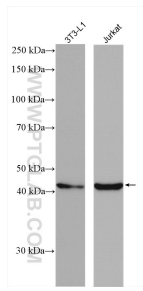
For technical support and original validation data for this product please contact:

T: 1 (888) 4PTGLAB (1-888-478-4522) (toll free in USA), or 1(312) 455-8498 (outside USA)

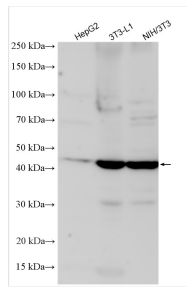
E: proteintech@ptglab.com  
W: ptglab.com

This product is exclusively available under Proteintech Group brand and is not available to purchase from any other manufacturer.

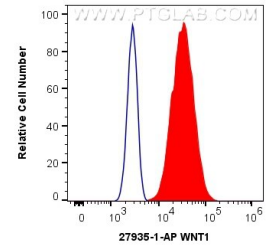
## Données de validation sélectionnées



Various lysates were subjected to SDS PAGE followed by western blot with 27935-1-AP (WNT1 antibody) at dilution of 1:1000 incubated at room temperature for 1.5 hours.



Various lysates were subjected to SDS PAGE followed by western blot with 27935-1-AP (WNT1 antibody) at dilution of 1:1500 incubated at room temperature for 1.5 hours.



1X10<sup>6</sup> HeLa cells were intracellularly stained with 0.4 ug Anti-Human WNT1 (27935-1-AP) and CoraLite@488-Conjugated AffiniPure Goat Anti-Rabbit IgG(H+L) at dilution 1:1000 (red), or 0.4 ug Isotype Control. Cells were fixed with 4% PFA and permeabilized with Flow Cytometry Perm Buffer (PF00011-C).