

À des fins de recherche uniquement

# Anticorps Polyclonal de lapin anti- PHLDB2



Numéro de catalogue: 27940-1-AP

## Informations de base

<b>Numéro de catalogue:</b> 27940-1-AP	<b>Numéro d'acquisition GenBank:</b> BC142678	<b>Méthode de purification:</b> Purification par affinité contre l'antigène
<b>Taille:</b> 150ul , Concentration: 800 µg/ml by Nanodrop and 433 µg/ml by Bradford method using BSA as the standard;	<b>Identification du gène (NCBI):</b> 90102	<b>Dilutions recommandées:</b> WB 1:1000-1:8000
<b>Hôte:</b> Lapin	<b>Nom complet:</b> pleckstrin homology-like domain, family B, member 2	
<b>Isotype:</b> IgG	<b>MW calculé</b> 1253 aa, 142 kDa	
<b>Immunogen Catalog Number:</b> AG27331	<b>MW observés:</b> 150 kDa	

## Applications

<b>Applications testées:</b> WB, ELISA	<b>Contrôles positifs:</b> WB : cellules A431,
<b>Spécificité de l'espèce:</b> Humain	

## Informations générales

The pleckstrin homology-like domain (PHLD) class of proteins are multifunctional proteins comprised of two families of proteins, PHLDA and PHLDB, each with 3 members: PHLDA1, PHLDA2, PHLDA3, PHLDB1, PHLDB2, and PHLDB3 (PMID: 32429563). All the family members possess a pleckstrin homology (PH) domain. PHLDB2, also known as LL5-beta, contains two predicted coiled-coil domains, a serine-rich region predicted to contain multiple protein kinase C phosphorylation sites in addition to a PH domain (PMID: 15851520). PHLDB2 is a filamin-binding protein that is an effector of the PI3K signaling pathway (PMID: 17174070). It is a PtdIns(3,4,5)P3 (PIP3) binding protein and can translocate to the plasma membrane in a receptor and PI3K-dependant manner (PMID: 12376540). PHLDB2 has also been reported as a component of the postsynaptic apparatus and a regulator of postsynaptic differentiation (PMID: 15851520).

## Stockage

**Stockage:**  
Stocker à -20°C. Stable pendant un an après l'expédition.  
**Tampon de stockage:**  
PBS avec azoture de sodium à 0,02 % et glycérol à 50 % pH 7,3  
L'aliquotage n'est pas nécessaire pour le stockage à -20C

\*\*\* Les 20ul contiennent 0,1% de BSA.

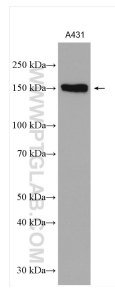
For technical support and original validation data for this product please contact:

T: 1 (888) 4PTGLAB (1-888-478-4522) (toll free in USA), or 1(312) 455-8498 (outside USA)

E: [proteintech@ptglab.com](mailto:proteintech@ptglab.com)  
W: [ptglab.com](http://ptglab.com)

This product is exclusively available under Proteintech Group brand and is not available to purchase from any other manufacturer.

## Données de validation sélectionnées



A431 cells were subjected to SDS PAGE followed by western blot with 27940-1-AP (PHLDB2 antibody) at dilution of 1:4000 incubated at room temperature for 1.5 hours.