

À des fins de recherche uniquement

Anticorps Polyclonal de lapin anti-CD19



Numéro de catalogue: 27949-1-AP

Phare

4 Publications

Informations de base

Numéro de catalogue:

27949-1-AP

Taille:

150ul, Concentration: 267 µg/ml by Bradford method using BSA as the standard;

Hôte:

Lapin

Isotype:

IgG

Immunogen Catalog Number:

AG27656

Numéro d'acquisition GenBank:

BC006338

Identification du gène (NCBI):

930

Nom complet:

CD19 molecule

MW calculé

556 aa, 61 kDa

MW observés:

95 kDa

Méthode de purification:

Purification par affinité contre l'antigène

Dilutions recommandées:

WB 1:1000-1:8000

IHC 1:50-1:500

IF 1:50-1:500

Applications

Applications testées:

IF, IHC, WB, ELISA

Demandes citées:

IHC

Spécificité de l'espèce:

Humain, rat

Espèces citées:

Humain, rat, souris

Remarque-IHC: il est suggéré de démasquer l'antigène avec un tampon de TE buffer pH 9,0; (*) A défaut, le démasquage de l'antigène peut être effectué avec un tampon citrate pH 6,0.

Contrôles positifs:

WB : cellules Daudi, cellules Raji

IHC : tissu d'amygdalite humain, tissu de côlon de rat, tissu de lymphome humain, tissu de thymus de rat

IF : cellules Raji,

Informations générales

CD19 is a B cell-specific molecule that controls B cell activation by complexing with the BCR. CD19 is a member of the Ig superfamily and is the dominant component for the signaling complex on B cells that includes CD21, CD81, and CD22. Humans with CD19 deficiency have reduced proliferative responses to BCR stimulation in vitro and mount impaired Ab responses to vaccination.

Publications notables

Autrice	Pubmed ID	Journal	Application
Hirofumi Watanabe	36609460	Inflamm Regen	IHC
Chen Su	37629071	Int J Mol Sci	IHC
Pengxiang Zhao	37375833	Pharmaceuticals (Basel)	IHC

Stockage

Stockage:

Stocker à -20°C. Stable pendant un an après l'expédition.

Tampon de stockage:

PBS avec azoture de sodium à 0,02 % et glycérol à 50 % pH 7,3

L'aliquotage n'est pas nécessaire pour le stockage à -20C

*** Les 20ul contiennent 0,1% de BSA.

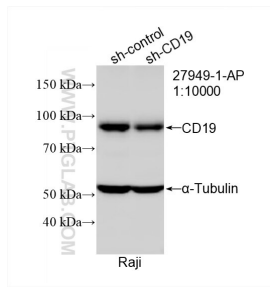
For technical support and original validation data for this product please contact:

T: 1 (888) 4PTGLAB (1-888-478-4522) (toll free in USA), or 1(312) 455-8498 (outside USA)

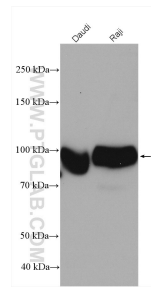
E: proteintech@ptglab.com
W: ptglab.com

This product is exclusively available under Proteintech Group brand and is not available to purchase from any other manufacturer.

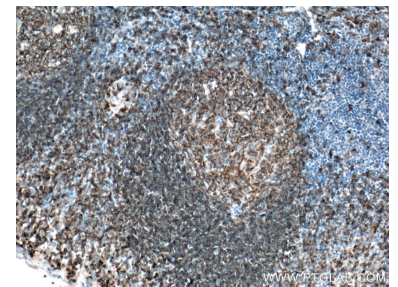
Données de validation sélectionnées



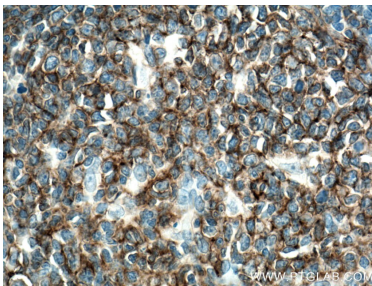
WB result of CD19 antibody (27949-1-AP; 1:10000); incubated at room temperature for 1.5 hours) with sh-Control and sh-CD19 transfected Raji cells.



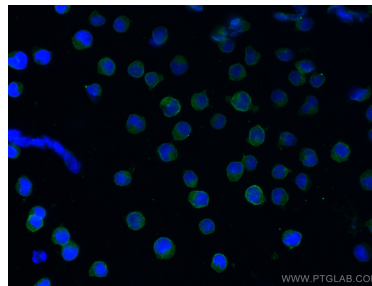
Daudi cells were subjected to SDS PAGE followed by western blot with 27949-1-AP (CD19 antibody) at dilution of 1:4000 incubated at room temperature for 1.5 hours.



Immunohistochemical analysis of paraffin-embedded human tonsillitis tissue slide using 27949-1-AP (CD19 antibody) at dilution of 1:200 (under 10x lens). Heat mediated antigen retrieval with Tris-EDTA buffer (pH 9.0).



Immunohistochemical analysis of paraffin-embedded human tonsillitis tissue slide using 27949-1-AP (CD19 antibody) at dilution of 1:200 (under 40x lens). Heat mediated antigen retrieval with Tris-EDTA buffer (pH 9.0).



Immunofluorescent analysis of (4% PFA) fixed Raji cells using CD19 antibody (27949-1-AP) at dilution of 1:200 and CoraLite@488-Conjugated AffiniPure Goat Anti-Rabbit IgG(H+L).