

À des fins de recherche uniquement

Anticorps Polyclonal de lapin anti-Cathepsin L



Numéro de catalogue: 27952-1-AP

Phare

2 Publications

Informations de base

Numéro de catalogue: 27952-1-AP	Numéro d'acquisition GenBank: BC012612	Méthode de purification: Purification par affinité contre l'antigène
Taille: 150ul, Concentration: 450 µg/ml by Nanodrop;	Identification du gène (NCBI): 1514	Dilutions recommandées: WB 1:500-1:1000 IHC 1:50-1:500
Hôte: Lapin	Nom complet: cathepsin L1	
Isotype: IgG	MW calculé: 38 kDa	
Immunogen Catalog Number: AG27813	MW observés: 36-39 kDa, 29 kDa	

Applications

Applications testées: IHC, WB, ELISA	Contrôles positifs: WB : cellules A549, IHC : tissu de cancer du foie humain,
Demandes citées: IHC, WB	
Spécificité de l'espèce: Humain, souris	
Espèces citées: Humain, souris	

Remarque-IHC: il est suggéré de démasquer l'antigène avec un tampon de TE buffer pH 9,0; (*) À défaut, le démasquage de l'antigène peut être effectué avec un tampon citrate pH 6,0.

Informations générales

CTSL1 (Cathepsin L1) is also named as CTSL and MEP, belongs to the peptidase C1 family. It is a lysosomal proteinase whose expression is also up-regulated in the skeletal muscle during starvation (PMID:20088826). It plays an intracellular role in normal intestinal epithelial polarization and initiation of neoplasia (PMID:17622569). CTSL1 also improves cardiac function and inhibits cardiac hypertrophy, inflammation, and fibrosis through blocking AKT/GSK3B signaling (PMID:19096818). The full length protein is 38 kDa with a signal peptide, two propeptide and a glycosylation site. It has been detected the 36 kDa, 39 kDa, 29 kDa and 21 kDa in rat gastrocnemius muscle. These forms of cathepsin L could either be attributed to differences in glycosylation or to partial processing of the proenzyme. (PMID:11696001)

Publications notables

Autrice	Pubmed ID	Journal	Application
Huixia Fan	35935881	Front Pharmacol	IHC
Zi-Bo Li	36627345	Acta Pharmacol Sin	WB

Stockage

Stockage:
Stocker à -20°C. Stable pendant un an après l'expédition.
Tampon de stockage:
PBS avec azoture de sodium à 0,02 % et glycérol à 50 % pH 7,3
L'aliquotage n'est pas nécessaire pour le stockage à -20C

*** Les 20ul contiennent 0,1% de BSA.

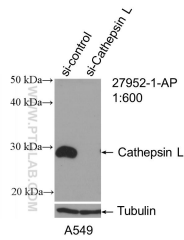
For technical support and original validation data for this product please contact:

T: 1 (888) 4PTGLAB (1-888-478-4522) (toll free in USA), or 1(312) 455-8498 (outside USA)

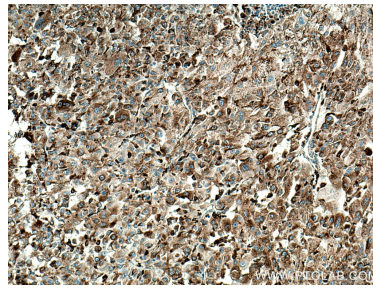
E: proteintech@ptglab.com
W: ptglab.com

This product is exclusively available under Proteintech Group brand and is not available to purchase from any other manufacturer.

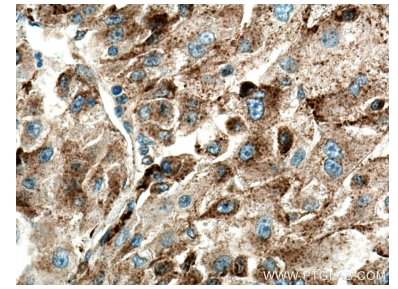
Données de validation sélectionnées



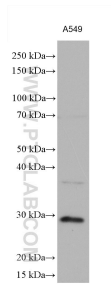
WB result of Cathepsin L antibody (27952-1-AP; 1:600; incubated at room temperature for 1.5 hours) with sh-Control and sh-Cathepsin L transfected A549 cells.



Immunohistochemical analysis of paraffin-embedded human liver cancer tissue slide using 27952-1-AP (Cathepsin L antibody) at dilution of 1:200 (under 10x lens). Heat mediated antigen retrieval with Tris-EDTA buffer (pH 9.0).



Immunohistochemical analysis of paraffin-embedded human liver cancer tissue slide using 27952-1-AP (Cathepsin L antibody) at dilution of 1:200 (under 40x lens). Heat mediated antigen retrieval with Tris-EDTA buffer (pH 9.0).



A549 cells were subjected to SDS PAGE followed by western blot with 27952-1-AP (Cathepsin L antibody) at dilution of 1:1000 incubated at room temperature for 1.5 hours.