

À des fins de recherche uniquement

Anticorps Polyclonal de lapin anti-KLKB1



Numéro de catalogue: 27991-1-AP

Informations de base

Numéro de catalogue: 27991-1-AP	Numéro d'acquisition GenBank: NM_000892	Méthode de purification: Purification par affinité contre l'antigène
Taille: 150ul , Concentration: 450 µg/ml by Nanodrop and 333 µg/ml by Bradford method using BSA as the standard;	Identification du gène (NCBI): 3818	Dilutions recommandées: WB 1:500-1:2000 IHC 1:50-1:500
Hôte: Lapin	Nom complet: kallikrein B, plasma (Fletcher factor)	
Isotype: IgG	MW calculé: 71 kDa	
Immunogen Catalog Number: AG27491	MW observés: 52-70 kDa	

Applications

Applications testées:

IHC, WB, ELISA

Spécificité de l'espèce:

Humain, rat, souris

Remarque-IHC: il est suggéré de démasquer l'antigène avec un tampon de TE buffer pH 9,0; (*) À défaut, le démasquage de l'antigène peut être effectué avec un tampon citrate pH 6,0.

Contrôles positifs:

WB : tissu rénal de souris, tissu pancréatique de rat, tissu pancréatique de souris, tissu rénal de rat

IHC : tissu de cancer du foie humain,

Informations générales

Human Plasma Kallikrein, a serine protease also named as KLKB1, KLK3, PPK or Kininogenin, is synthesized in the liver and circulates in the plasma by binding to high molecular weight (HMW) kininogen or as a free zymogen. It cleaves HMW kininogen, its major physiological substrate, to release the potent vasodilator peptide bradykinin. It is also able to cleave a number of inactive precursor proteins to generate active products, such as plasminogen and prourokinase. Thus, it plays an important role in blood pressure regulation, fibrinolysis, and neutrophil activation. KLKB1 precursor contains a signal peptide (residues 1 to 19) and a pro form sequence (residues 20 to 638). Upon activation, the pro form is converted to a heavy chain and a light chain, which is linked by disulfide bonds and the latter contains the catalytic domain (PMID: 3521732). KLKB1 is a ~70 kDa protein and can be detected as 80-86 kDa (glycosylation form), 52 kDa (heavy chain), 36-44 kDa (light chain) and 18 kDa (often detected in cancer) (PMID: 17963278, 3521732). KLKB1 may be a potential candidate serum biomarker of cancer. The antigen of this antibody just cover the heavy chain of KLKB1, so this antibody cannot recognize the light chain.

Stockage

Stockage:

Stocker à -20°C. Stable pendant un an après l'expédition.

Tampon de stockage:

PBS avec azoture de sodium à 0,02 % et glycérol à 50 % pH 7,3

L'aliquotage n'est pas nécessaire pour le stockage à -20C

*** Les 20ul contiennent 0,1% de BSA.

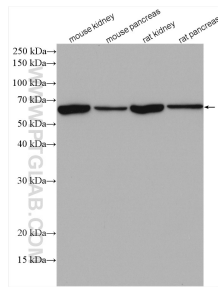
For technical support and original validation data for this product please contact:

T: 1 (888) 4PTGLAB (1-888-478-4522) (toll free in USA), or 1(312) 455-8498 (outside USA)

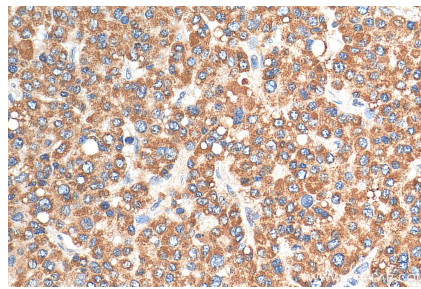
E: proteintech@ptglab.com
W: ptglab.com

This product is exclusively available under Proteintech Group brand and is not available to purchase from any other manufacturer.

Données de validation sélectionnées



Various lysates were subjected to SDS PAGE followed by western blot with 27991-1-AP (KLKB1 antibody) at dilution of 1:1000 incubated at room temperature for 1.5 hours.



Immunohistochemical analysis of paraffin-embedded human liver cancer tissue slide using 27991-1-AP (KLKB1 antibody) at dilution of 1:200 (under 40x lens). Heat mediated antigen retrieval with Tris-EDTA buffer (pH 9.0).