

À des fins de recherche uniquement

# Anticorps Polyclonal de lapin anti-ATP1A3 (middle)



Numéro de catalogue: 28030-1-AP

2 Publications

## Informations de base

Numéro de catalogue: 28030-1-AP	Numéro d'acquisition GenBank: BC015566	Méthode de purification: Purification par affinité contre l'antigène
Taille: 150ul , Concentration: 300 µg/ml by Nanodrop and 267 µg/ml by Bradford method using BSA as the standard;	Identification du gène (NCBI): 478	Dilutions recommandées: WB 1:5000-1:50000 IHC 1:50-1:500 IF 1:50-1:500
Hôte: Lapin	Nom complet: ATPase, Na <sup>+</sup> /K <sup>+</sup> transporting, alpha 3 polypeptide	
Isotype: IgG	MW calculé: 113 kDa	
Immunogen Catalog Number: AG27705	MW observés: 113 kDa	

## Applications

### Applications testées:

IF, IHC, WB, ELISA

### Demandes citées:

IF, WB

### Spécificité de l'espèce:

Humain

### Espèces citées:

Humain

**Remarque-IHC: il est suggéré de démasquer l'antigène avec un tampon de TE buffer pH 9,0; (\*) A défaut, 'le démasquage de l'antigène peut être 'effectué avec un tampon citrate pH 6,0.**

### Contrôles positifs:

WB : cellules HeLa, cellules MG U-87, cellules SH-SY5Y, cellules SKOV-3

IHC : tissu de cancer de la prostate humain,

IF : cellules HeLa,

## Informations générales

ATP1A3 participates in the catalytic hydrolysis of ATP and the exchanging of sodium and potassium ions across plasma membrane. The catalytic activity mode is  $ATP + H_2O + Na^+(In) + K^+(Out) = ADP + phosphate + Na^+(Out) + K^+(In)$ . It has been published that the neurologic disorders rapid-onset dystonia-parkinsonism (RDP), alternating hemiplegia of childhood (ACH) and CAPOS syndrome (cerebellar ataxia, areflexia, pes cavus, optic atrophy and sensorineural hearing loss) are all related with the mutation of ATP1A3. There are other reports suggest that early life epilepsy and episodic apnea revealing are potentially associated with the mutation of ATP1A3 as a result of impairment of Na/K homeostasis. This antibody is generated against the middle region (378-580aa) of ATP1A3 and detects 113 kDa protein in SDS-PAGE. (PMID: 30097153, 20301294, 29922587)

## Publications notables

Autrice	Pubmed ID	Journal	Application
Yi-Ing Chen	35618735	Nat Commun	WB
Satoko Miyatake	33762331	Sci Adv	WB, IF

## Stockage

### Stockage:

Stocker à -20°C. Stable pendant un an après l'expédition.

### Tampon de stockage:

PBS avec azoture de sodium à 0,02 % et glycérol à 50 % pH 7,3

L'aliquotage n'est pas nécessaire pour le stockage à -20C

\*\*\* Les 20ul contiennent 0,1% de BSA.

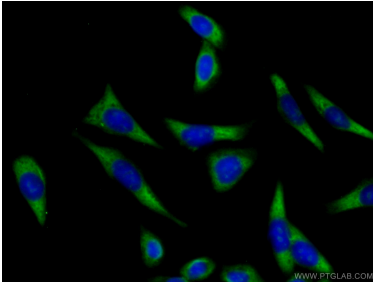
For technical support and original validation data for this product please contact:

T: 1 (888) 4PTGLAB (1-888-478-4522) (toll free in USA), or 1(312) 455-8498 (outside USA)

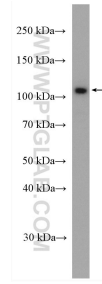
E: [proteintech@ptglab.com](mailto:proteintech@ptglab.com)  
W: [ptglab.com](http://ptglab.com)

This product is exclusively available under Proteintech Group brand and is not available to purchase from any other manufacturer.

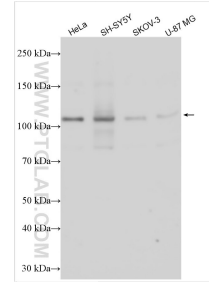
## Données de validation sélectionnées



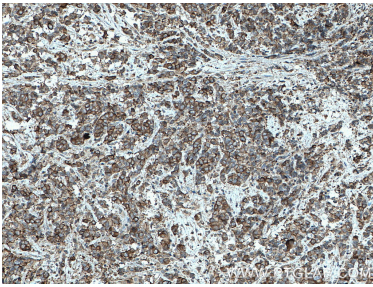
Immunofluorescent analysis of (-20°C Ethanol) fixed HeLa cells using 28030-1-AP (ATP1A3 (middle) antibody) at dilution of 1:50 and CoraLite488-Conjugated AffiniPure Goat Anti-Rabbit IgG(H+L).



HeLa cells were subjected to SDS PAGE followed by western blot with 28030-1-AP (ATP1A3 antibody) at dilution of 1:2000 incubated at room temperature for 1.5 hours.



Various lysates were subjected to SDS PAGE followed by western blot with 28030-1-AP (ATP1A3 (middle) antibody) at dilution of 1:14000 incubated at room temperature for 1.5 hours.



Immunohistochemical analysis of paraffin-embedded human prostate cancer tissue slide using 28030-1-AP (ATP1A3 antibody) at dilution of 1:200 (under 10x lens. Heat mediated antigen retrieval with Tris-EDTA buffer (pH 9.0).