

À des fins de recherche uniquement

Anticorps Polyclonal de lapin anti-Cd68



Numéro de catalogue: 28058-1-AP

151 Publications

Informations de base

Numéro de catalogue: 28058-1-AP	Numéro d'acquisition GenBank: NM_001291058	Méthode de purification: Purification par affinité contre l'antigène
Taille: 150ul, Concentration: 400 µg/ml by Nanodrop;	Identification du gène (NCBI): 12514	Dilutions recommandées: WB 1:600-1:2000 IHC 1:500-1:2000 IF 1:50-1:500
Hôte: Lapin	Nom complet: CD68 antigen	
Isotype: IgG	MW calculé: 35 kDa	
Immunogen Catalog Number: AG27827	MW observés: 100 kDa	

Applications

Applications testées:
FC, IF, IHC, WB, ELISA

Demandes citées:
FC, IF, IHC, WB

Spécificité de l'espèce:
souris

Espèces citées:
canin, porc, rat, souris

Remarque-IHC: il est suggéré de démasquer l'antigène avec un tampon de TE buffer pH 9,0; (*) À défaut, le démasquage de l'antigène peut être effectué avec un tampon citrate pH 6,0.

Contrôles positifs:

WB : cellules RAW 264.7, tissu splénique de souris

IHC : tissu splénique de souris, tissu hépatique de souris

IF : tissu splénique de souris,

Informations générales

Mouse CD68 (also known as macrosialin) is a type I transmembrane glycoprotein that is highly and specifically expressed by mouse tissue macrophages, and to a lesser extent by dendritic cells. It belongs to the lysosomal/endosomal-associated membrane glycoprotein (LAMP) family and primarily localizes to lysosomes and endosomes with a smaller fraction circulating to the cell surface. CD68 is also a member of the scavenger receptor family. It may play a role in phagocytic activities of tissue macrophages.

Publications notables

Autrice	Pubmed ID	Journal	Application
Aibin Liu	32991738	J Pathol	IHC
Guangping Lu	36235670	Nutrients	IF
Wei Liu	34562326	J Pineal Res	IF

Stockage

Stockage:

Stocker à -20°C. Stable pendant un an après l'expédition.

Tampon de stockage:

PBS avec azoture de sodium à 0,02 % et glycérol à 50 % pH 7,3

L'aliquotage n'est pas nécessaire pour le stockage à -20C

*** Les 20ul contiennent 0,1% de BSA.

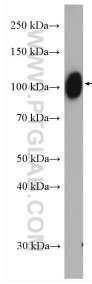
For technical support and original validation data for this product please contact:

T: 1 (888) 4PTGLAB (1-888-478-4522) (toll free in USA), or 1(312) 455-8498 (outside USA)

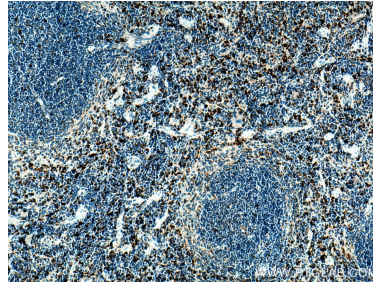
E: proteintech@ptglab.com
W: ptglab.com

This product is exclusively available under Proteintech Group brand and is not available to purchase from any other manufacturer.

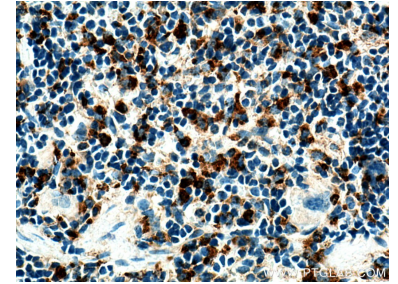
Données de validation sélectionnées



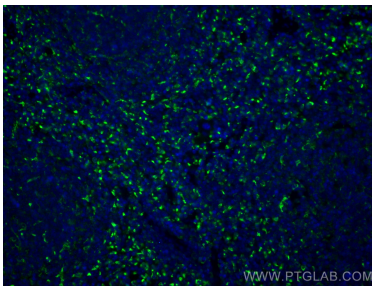
RAW 264.7 cells were subjected to SDS PAGE followed by western blot with 28058-1-AP (Cd68 antibody) at dilution of 1:2000 incubated at room temperature for 1.5 hours.



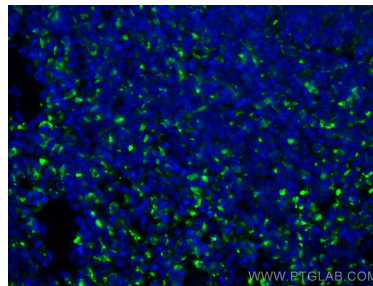
Immunohistochemical analysis of paraffin-embedded mouse spleen tissue slide using 28058-1-AP (Cd68 antibody) at dilution of 1:1000 (under 10x lens). Heat mediated antigen retrieval with Tris-EDTA buffer (pH 9.0).



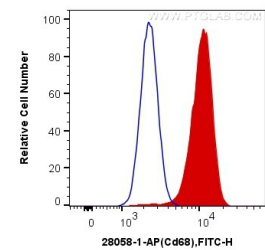
Immunohistochemical analysis of paraffin-embedded mouse spleen tissue slide using 28058-1-AP (Cd68 antibody) at dilution of 1:1000 (under 40x lens). Heat mediated antigen retrieval with Tris-EDTA buffer (pH 9.0).



Immunofluorescent analysis of (4% PFA) fixed mouse spleen tissue using Cd68 antibody (28058-1-AP) at dilution of 1:200 and CoraLite@488-Conjugated AffiniPure Goat Anti-Rabbit IgG(H+L).



Immunofluorescent analysis of (4% PFA) fixed mouse spleen tissue using Cd68 antibody (28058-1-AP) at dilution of 1:200 and CoraLite@488-Conjugated AffiniPure Goat Anti-Rabbit IgG(H+L).



1×10^6 RAW 264.7 cells were intracellularly stained with 0.4 ug Anti-Mouse Cd68 (28058-1-AP) and CoraLite@488-Conjugated AffiniPure Goat Anti-Rabbit IgG(H+L) at dilution 1:1000 (red), or 0.4 ug Control Antibody. Cells were fixed with 4% PFA and permeabilized with Flow Cytometry Perm Buffer (PF00011-C).