

À des fins de recherche uniquement

# Anticorps Polyclonal de lapin anti-CD40



Numéro de catalogue: 28158-1-AP

Phare

4 Publications

## Informations de base

Numéro de catalogue:

28158-1-AP

Taille:

150ul, Concentration: 350 µg/ml by Nanodrop and 267 µg/ml by Bradford method using BSA as the standard;

Hôte:

Lapin

Isotype:

IgG

Immunogen Catalog Number:

AG28033

Numéro d'acquisition GenBank:

BC012419

Identification du gène (NCBI):

958

Nom complet:

CD40 molecule, TNF receptor superfamily member 5

MW calculé

277 aa, 31 kDa

MW observés:

40-45 kDa

Méthode de purification:

Purification par affinité contre l'antigène

Dilutions recommandées:

WB 1:500-1:1000

## Applications

Applications testées:

WB, ELISA

Demandes citées:

IHC, WB

Spécificité de l'espèce:

Humain

Espèces citées:

Humain

Contrôles positifs:

WB: cellules Daudi, cellules Ramos

## Informations générales

CD40, also named as TNFRSF5 and Bp50, is a receptor for TNFSF5/CD40LG. It is a member of the TNFR superfamily and is responsible for the efficient activation of cell-mediated and humoral immune responses via activated T cells and B cells respectively. Defects in CD40 lead to hyper-IgM immunodeficiency syndrome type 3 (HIGM3) (PMID: 11675497). This is an autosomal recessive disorder that includes the inability of B cells to undergo isotype switching, a key step in the final differentiation of the humoral immune response, and an inability to mount an antibody-specific immune response.

## Publications notables

Autrice	Pubmed ID	Journal	Application
Xueting Zhang	34678319	Toxicology	WB
Yaojun Peng	34184409	FEBS Open Bio	WB
Wenmin Song	33381228	Cardiovasc Ther	WB

## Stockage

Stockage:

Stocker à -20°C. Stable pendant un an après l'expédition.

Tampon de stockage:

PBS avec azoture de sodium à 0,02 % et glycérol à 50 % pH 7,3

L'aliquotage n'est pas nécessaire pour le stockage à -20C

\*\*\* Les 20ul contiennent 0,1% de BSA.

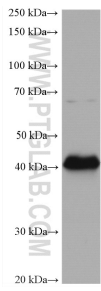
For technical support and original validation data for this product please contact:

T: 1 (888) 4PTGLAB (1-888-478-4522) (toll free in USA), or 1(312) 455-8498 (outside USA)

E: [proteintech@ptglab.com](mailto:proteintech@ptglab.com)  
W: [ptglab.com](http://ptglab.com)

This product is exclusively available under Proteintech Group brand and is not available to purchase from any other manufacturer.

## Données de validation sélectionnées



Daudi cells were subjected to SDS PAGE followed by western blot with 28158-1-AP (CD40 antibody) at dilution of 1:600 incubated at room temperature for 1.5 hours.