

À des fins de recherche uniquement

Anticorps Polyclonal de lapin anti-PMS1



Numéro de catalogue: 28186-1-AP

Informations de base

Numéro de catalogue:
28186-1-AP

Taille:
150ul, Concentration: 800 µg/ml by
Nanodrop;

Hôte:
Lapin

Isotype:
IgG

Immunogen Catalog Number:
AG28132

Numéro d'acquisition GenBank:
BC096331

Identification du gène (NCBI):
5378

Nom complet:
PMS1 postmeiotic segregation
increased 1 (*S. cerevisiae*)

MW observés:
106 kDa

Méthode de purification:
Purification par affinité contre
l'antigène

Dilutions recommandées:
WB 1:1000-1:6000

Applications

Applications testées:
WB, ELISA

Spécificité de l'espèce:
Humain

Contrôles positifs:

WB : cellules Jurkat, cellules HeLa, cellules HepG2,
cellules K-562, cellules MOLT-4

Informations générales

PMS1 Homolog 1 is a member of the DNA mismatch repair enzymes (MMREs) which is to eliminate the mismatch of insertions and deletions as a consequence of DNA polymerase errors at DNA synthesis in eukaryotes. PMS1 and MLH1 could form a heterodimer MutL β that belongs to MMREs (PMID:25619773). In the MMR system, the MutS complex recognizes the DNA mispairs firstly, and then the Mlh1-Pms1 and other associated proteins such as PCNA, RFC, Exo1 were recruited, inducing Exonuclease 1 (Exo1)-dependent and -independent MMR pathways (PMID:24981171). Mutations in this gene cause hereditary nonpolyposis colorectal cancer (HNPCC), which is also known as Lynch syndrome. It was reported that PMS1 is a widely expressed protein and located in the nucleus. Alternative splicing allows for 4 isoforms of PMS1 protein.

Stockage

Stockage:

Stocker à -20°C. Stable pendant un an après l'expédition.

Tampon de stockage:

PBS avec azoture de sodium à 0,02 % et glycérol à 50 % pH 7,3

L'aliquotage n'est pas nécessaire pour le stockage à -20C

*** Les 20ul contiennent 0,1% de BSA.

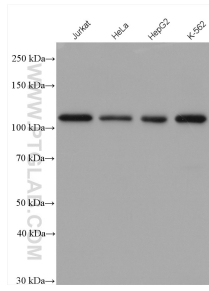
For technical support and original validation data for this product please contact:

T: 1 (888) 4PTGLAB (1-888-478-4522) (toll free
in USA), or 1(312) 455-8498 (outside USA)

E: proteintech@ptglab.com
W: ptglab.com

This product is exclusively available under Proteintech Group brand and is not available to purchase from any other manufacturer.

Données de validation sélectionnées



Various lysates were subjected to SDS PAGE followed by western blot with 28186-1-AP (PMS1 antibody) at dilution of 1:3000 incubated at room temperature for 1.5 hours.