

À des fins de recherche uniquement

# Anticorps Polyclonal de lapin anti-p21



Numéro de catalogue: 28248-1-AP

18 Publications

## Informations de base

Numéro de catalogue:

28248-1-AP

Taille:

150ul, Concentration: 500 µg/ml by Nanodrop;

Hôte:

Lapin

Isotype:

IgG

Immunogen Catalog Number:

AG28394

Numéro d'acquisition GenBank:

NM\_001111099

Identification du gène (NCBI):

12575

Nom complet:

cyclin-dependent kinase inhibitor 1A (P21)

MW calculé

18 kDa

MW observés:

18 kDa

Méthode de purification:

Purification par affinité contre l'antigène

Dilutions recommandées:

WB 1:500-1:2000

IF 1:50-1:500

## Applications

Applications testées:

IF, WB, ELISA

Demandes citées:

IF, IHC, WB

Spécificité de l'espèce:

rat, souris

Espèces citées:

rat, souris

Contrôles positifs:

WB : cellules PC-12, cellules DC2.4, cellules HSC-T6, cellules Neuro-2a, cellules NIH/3T3, cellules RAW 264.7, cellules Sp2/0

IF : cellules NIH/3T3,

## Informations générales

CDKN1A (p21, CIP1, WAF1) is a cyclin-dependent kinase inhibitor. CDKN1A binds to and inhibits the activity of cyclin-CDK2 or -CDK4 complexes, and thus functions as a regulator of cell cycle progression at the G1 phase. The expression of CDKN1A is induced by wild-type but not mutant p53 protein, through which CDKN1A mediates the p53-dependent cell cycle G1 phase arrest in response to a variety of stress stimuli. CDKN1A can interact with proliferating cell nuclear antigen (PCNA), and plays a regulatory role in S phase DNA replication and DNA damage repair. CDKN1A was reported to be specifically cleaved by CASP3-like caspases, which thus leads to a dramatic activation of CDK2, and may be instrumental in the execution of apoptosis following caspase activation.

## Publications notables

Autrice	Pubmed ID	Journal	Application
Jingjing Pan	36152427	Ecotoxicol Environ Saf	WB
Jiying Hou	36077440	Int J Mol Sci	WB
Haowei Fu	36423848	Sci Total Environ	WB

## Stockage

Stockage:

Stocker à -20°C. Stable pendant un an après l'expédition.

Tampon de stockage:

PBS avec azoture de sodium à 0,02 % et glycérol à 50 % pH 7,3

L'aliquotage n'est pas nécessaire pour le stockage à -20C

\*\*\* Les 20ul contiennent 0,1% de BSA.

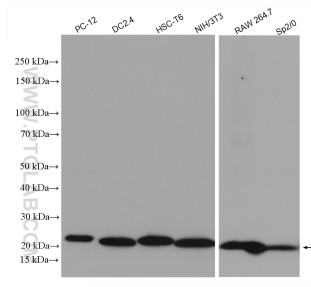
For technical support and original validation data for this product please contact:

T: 1 (888) 4PTGLAB (1-888-478-4522) (toll free in USA), or 1(312) 455-8498 (outside USA)

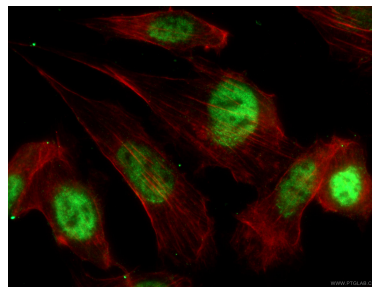
E: [proteintech@ptglab.com](mailto:proteintech@ptglab.com)  
W: [ptglab.com](http://ptglab.com)

This product is exclusively available under Proteintech Group brand and is not available to purchase from any other manufacturer.

## Données de validation sélectionnées



Various lysates were subjected to SDS PAGE followed by western blot with 28248-1-AP (p21 antibody) at dilution of 1:1000 incubated at room temperature for 1.5 hours.



Immunofluorescent analysis of (-20°C Ethanol) fixed NIH/3T3 cells using 28248-1-AP (p21 antibody), at dilution of 1:200 and CoraLite®488-Conjugated AffiniPure Goat Anti-Rabbit IgG(H+L). F-actin is stained using CL555-phalloidin (red).