

À des fins de recherche uniquement

Anticorps Polyclonal de lapin anti-EOMES/TRB2



Numéro de catalogue: 28316-1-AP

Informations de base

Numéro de catalogue: 28316-1-AP	Numéro d'acquisition GenBank: NM_001278182	Méthode de purification: Purification par affinité contre l'antigène
Taille: 150ul , Concentration: 700 µg/ml by Nanodrop and 300 µg/ml by Bradford method using BSA as the standard;	Identification du gène (NCBI): 8320	Dilutions recommandées: WB 1:500-1:1000
Hôte: Lapin	Nom complet: eomesodermin homolog (Xenopus laevis)	
Isotype: IgG	MW calculé: 73 aa	
Immunogen Catalog Number: AG27634	MW observés: 70-72 kDa	

Applications

Applications testées: WB, ELISA	Contrôles positifs: WB : tissu cérébral de souris, tissu cérébral de rat
Spécificité de l'espèce: Humain, rat, souris	

Informations générales

EOMES/TRB2 (also named Eomesodermin/Tbr2) encode T-box transcription factor expressed highly in the intermediate progenitor stage of the developing neuron. During migration of the neurons, radial glia divide and migrate towards the surface of the cerebral cortex, there are three stages of cellular development: radial glia, intermediate progenitors, and postmitotic projection neurons. Radial glia express Pax6, while intermediate progenitor cells express Eomesodermin/Tbr2, and postmitotic projection neurons express Tbr1 (PMID:15634788; PMID:16320258). This process also called neurogenesis, and demonstrated that Eomesodermin/Tbr2 has been implicated in neurodevelopment. According to the mouse model, several articles showed that EOMES/TRB2 KO mice having proliferating cells decreased and having smaller upper cortical layers and a smaller sub ventricular zone in the brain (PMID:18940588). What's more, Eomesodermin/Tbr2 has also been found participating in immune response (PMID:20713880).

Stockage

Stockage:
Stocker à -20°C. Stable pendant un an après l'expédition.
Tampon de stockage:
PBS avec azoture de sodium à 0,02 % et glycérol à 50 % pH 7,3
L'aliquotage n'est pas nécessaire pour le stockage à -20C

*** Les 20ul contiennent 0,1% de BSA.

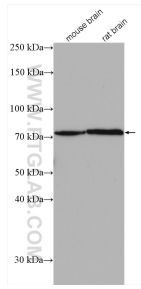
For technical support and original validation data for this product please contact:

T: 1 (888) 4PTGLAB (1-888-478-4522) (toll free in USA), or 1(312) 455-8498 (outside USA)

E: proteintech@ptglab.com
W: ptglab.com

This product is exclusively available under Proteintech Group brand and is not available to purchase from any other manufacturer.

Données de validation sélectionnées



Various lysates were subjected to SDS PAGE followed by western blot with 28316-1-AP (EOMES antibody) at dilution of 1:600 incubated at room temperature for 1.5 hours.